

## Product datasheet for **TA811831**

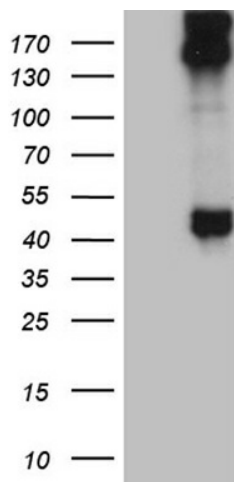
### **KRT35 Mouse Monoclonal Antibody [Clone ID: OT11A4]**

#### **Product data:**

Product Type:	Primary Antibodies
Clone Name:	OT11A4
Applications:	WB
Recommended Dilution:	WB 1:2000
Reactivity:	Human, Mouse, Rat
Host:	Mouse
Isotype:	IgG2a
Clonality:	Monoclonal
Immunogen:	Full length human recombinant protein of human KRT35 (NP_002271) produced in E.coli.
Formulation:	PBS (pH 7.3) containing 1% BSA, 50% glycerol and 0.02% sodium azide.
Concentration:	1 mg/ml
Purification:	Purified from mouse ascites fluids or tissue culture supernatant by affinity chromatography (protein A/G)
Conjugation:	Unconjugated
Storage:	Store at -20°C as received.
Stability:	Stable for 12 months from date of receipt.
Predicted Protein Size:	50.2 kDa
Gene Name:	keratin 35
Database Link:	<a href="#">NP_002271</a> <a href="#">Entrez Gene 53617 Mouse</a> <a href="#">Entrez Gene 287697 Rat</a> <a href="#">Entrez Gene 3886 Human</a> <a href="#">Q92764</a>
Background:	The protein encoded by this gene is a member of the keratin gene family. This type I hair keratin is an acidic protein which heterodimerizes with type II keratins to form hair and nails. The type I hair keratins are clustered in a region of chromosome 17q12-q21 and have the same direction of transcription. [provided by RefSeq, Jul 2008]
Synonyms:	Ha-5; HA5; hHa5; KRTHA5



[View online »](#)

**Product images:**

HEK293T cells were transfected with the pCMV6-ENTRY control (Cat# [PS100001], Left lane) or pCMV6-ENTRY KRT35 (Cat# [RC218691], Right lane) cDNA for 48 hrs and lysed. Equivalent amounts of cell lysates (5 ug per lane) were separated by SDS-PAGE and immunoblotted with anti-KRT35 (Cat# TA811831)(1:2000). Positive lysates [LY419432] (100ug) and [LC419432] (20ug) can be purchased separately from OriGene.