

Product datasheet for **TA811821**

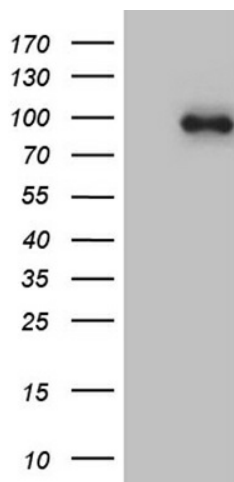
KIF6 Mouse Monoclonal Antibody [Clone ID: OTI1B3]

Product data:

Product Type:	Primary Antibodies
Clone Name:	OTI1B3
Applications:	WB
Recommended Dilution:	WB 1:2000
Reactivity:	Human
Host:	Mouse
Isotype:	IgG1
Clonality:	Monoclonal
Immunogen:	Human recombinant protein fragment corresponding to amino acids 1-350 of human KIF6 (NP_659464) produced in E.coli.
Formulation:	PBS (pH 7.3) containing 1% BSA, 50% glycerol and 0.02% sodium azide.
Concentration:	1 mg/ml
Purification:	Purified from mouse ascites fluids or tissue culture supernatant by affinity chromatography (protein A/G)
Conjugation:	Unconjugated
Storage:	Store at -20°C as received.
Stability:	Stable for 12 months from date of receipt.
Predicted Protein Size:	92.4 kDa
Gene Name:	kinesin family member 6
Database Link:	NP_659464 Entrez Gene 221458 Human Q6ZMV9
Synonyms:	C6orf102; dj137F1.4; dj188D3.1; dj1043E3.1
Protein Families:	Druggable Genome



[View online »](#)

Product images:

HEK293T cells were transfected with the pCMV6-ENTRY control (Left lane) or pCMV6-ENTRY KIF6 ([RC214978], Right lane) cDNA for 48 hrs and lysed. Equivalent amounts of cell lysates (5 ug per lane) were separated by SDS-PAGE and immunoblotted with anti-KIF6 (1:2000). Positive lysates [LY408088] (100ug) and [LC408088] (20ug) can be purchased separately from OriGene.