

Product datasheet for **TA811816S**

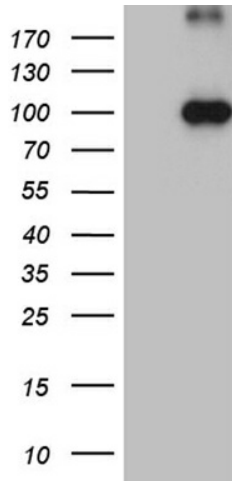
KIF6 Mouse Monoclonal Antibody [Clone ID: OTI5G2]

Product data:

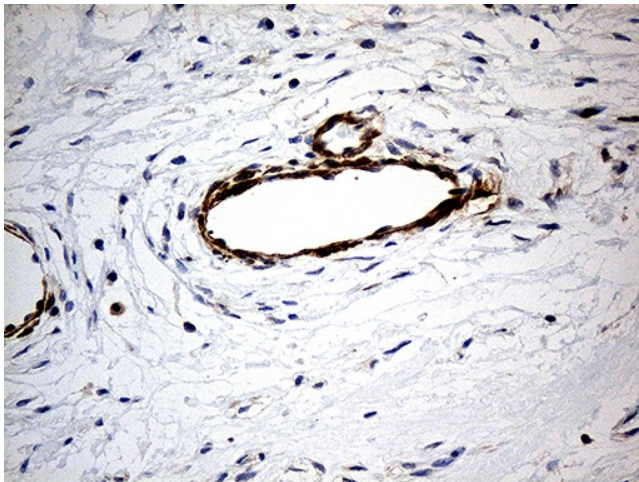
Product Type:	Primary Antibodies
Clone Name:	OTI5G2
Applications:	IHC, WB
Recommended Dilution:	WB 1:2000, IHC 1:500
Reactivity:	Human
Host:	Mouse
Isotype:	IgG2a
Clonality:	Monoclonal
Immunogen:	Human recombinant protein fragment corresponding to amino acids 1-350 of human KIF6 (NP_659464) produced in E.coli.
Formulation:	PBS (pH 7.3) containing 1% BSA, 50% glycerol and 0.02% sodium azide.
Concentration:	1 mg/ml
Purification:	Purified from mouse ascites fluids or tissue culture supernatant by affinity chromatography (protein A/G)
Conjugation:	Unconjugated
Storage:	Store at -20°C as received.
Stability:	Stable for 12 months from date of receipt.
Predicted Protein Size:	92.4 kDa
Gene Name:	kinesin family member 6
Database Link:	NP_659464 Entrez Gene 221458 Human Q6ZMV9
Synonyms:	C6orf102; dj137F1.4; dj188D3.1; dj1043E3.1
Protein Families:	Druggable Genome



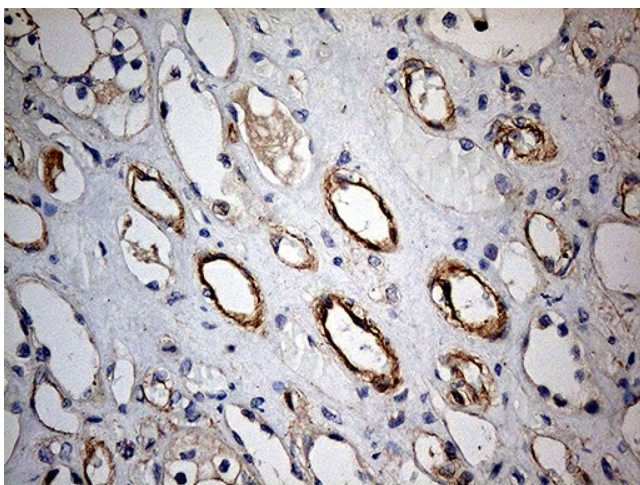
[View online »](#)

Product images:

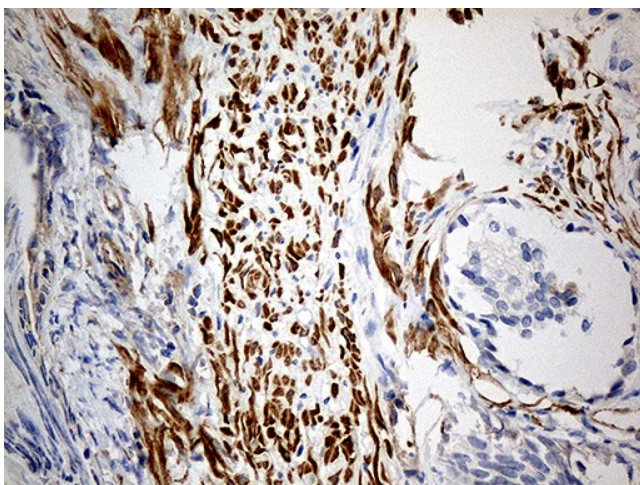
HEK293T cells were transfected with the pCMV6-ENTRY control (Cat# [PS100001], Left lane) or pCMV6-ENTRY KIF6 (Cat# [RC214978], Right lane) cDNA for 48 hrs and lysed. Equivalent amounts of cell lysates (5 ug per lane) were separated by SDS-PAGE and immunoblotted with anti-KIF6 (Cat# [TA811816])(1:2000). Positive lysates [LY408088] (100ug) and [LC408088] (20ug) can be purchased separately from OriGene.



Immunohistochemical staining of paraffin-embedded Human breast tissue within the normal limits using anti-KIF6 mouse monoclonal antibody. (Heat-induced epitope retrieval by 1mM EDTA in 10mM Tris buffer (pH8.5) at 120°C for 3min, [TA811816]) (1:500)



Immunohistochemical staining of paraffin-embedded Human Kidney tissue within the normal limits using anti-KIF6 mouse monoclonal antibody. (Heat-induced epitope retrieval by 1mM EDTA in 10mM Tris buffer (pH8.5) at 120°C for 3min, [TA811816]) (1:500)



Immunohistochemical staining of paraffin-embedded Human prostate tissue within the normal limits using anti-KIF6 mouse monoclonal antibody. (Heat-induced epitope retrieval by 1mM EDTA in 10mM Tris buffer (pH8.5) at 120°C for 3min, [TA811816]) (1:500)