

Product datasheet for **TA811804AM**

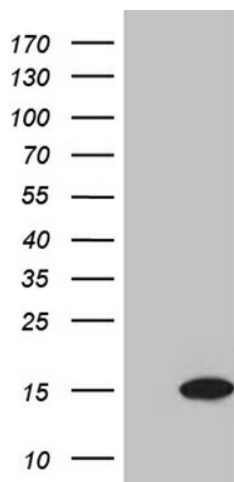
EIF4E3 Mouse Monoclonal Antibody (Biotin conjugated) [Clone ID: OTI1D1]

Product data:

Product Type:	Primary Antibodies
Clone Name:	OTI1D1
Applications:	WB
Recommended Dilution:	WB 1:2000
Reactivity:	Human, Mouse, Rat
Host:	Mouse
Isotype:	IgG1
Clonality:	Monoclonal
Immunogen:	Full length human recombinant protein of human EIF4E3 (NP_775495) produced in E.coli.
Formulation:	PBS (pH 7.3) containing 1% BSA, 50% glycerol and 0.02% sodium azide.
Concentration:	0.5 mg/ml
Purification:	Purified from mouse ascites fluids or tissue culture supernatant by affinity chromatography (protein A/G)
Conjugation:	Biotin
Storage:	Store at -20°C as received.
Stability:	Stable for 12 months from date of receipt.
Predicted Protein Size:	13.2 kDa
Gene Name:	eukaryotic translation initiation factor 4E family member 3
Database Link:	NP_775495 Entrez Gene 66892 Mouse Entrez Gene 297481 Rat Entrez Gene 317649 Human Q8N5X7
Background:	EIF4E3 belongs to the EIF4E family of translational initiation factors that interact with the 5-prime cap structure of mRNA and recruit mRNA to the ribosome (Joshi et al., 2004 [PubMed 15153109]). [supplied by OMIM, Mar 2008]
Synonyms:	eIF-4E3; eIF4E-3



[View online »](#)

Product images:

HEK293T cells were transfected with the pCMV6-ENTRY control (Left lane) or pCMV6-ENTRY EIF4E3 ([RC209694], Right lane) cDNA for 48 hrs and lysed. Equivalent amounts of cell lysates (5 ug per lane) were separated by SDS-PAGE and immunoblotted with anti-EIF4E. Positive lysates [LY406613] (100ug) and [LC406613] (20ug) can be purchased separately from OriGene.