

Product datasheet for **TA811793S**

GPCR 2037 (GPR151) Mouse Monoclonal Antibody [Clone ID: OTI3D1]

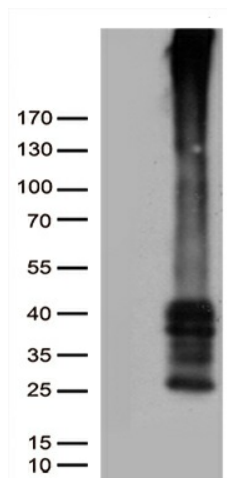
Product data:

| | |
|-------------------------|---|
| Product Type: | Primary Antibodies |
| Clone Name: | OTI3D1 |
| Applications: | WB |
| Recommended Dilution: | WB 1:500 |
| Reactivity: | Human |
| Host: | Mouse |
| Isotype: | IgG1 |
| Clonality: | Monoclonal |
| Immunogen: | Full length human recombinant protein of human GPR151 (NP_919227) produced in HEK293T cell. |
| Formulation: | PBS (pH 7.3) containing 1% BSA, 50% glycerol and 0.02% sodium azide. |
| Concentration: | 1 mg/ml |
| Purification: | Purified from mouse ascites fluids or tissue culture supernatant by affinity chromatography (protein A/G) |
| Conjugation: | Unconjugated |
| Storage: | Store at -20°C as received. |
| Stability: | Stable for 12 months from date of receipt. |
| Predicted Protein Size: | 46.5 kDa |
| Gene Name: | G protein-coupled receptor 151 |
| Database Link: | NP_919227 Entrez Gene 134391 Human Q8TDV0 |
| Background: | Orphan receptor. [UniProtKB/Swiss-Prot Function] |
| Synonyms: | GALR4; GALRL; GPCR; PGR7 |
| Protein Families: | Druggable Genome, Transmembrane |

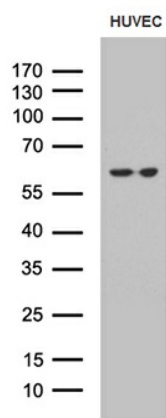


[View online »](#)

Product images:



HEK293T cells were transfected with the pCMV6-ENTRY control (Cat# [PS100001], Left lane) or pCMV6-ENTRY GPR151 (Cat# [RC220856], Right lane) cDNA for 48 hrs and lysed. Equivalent amounts of cell lysates (5 ug per lane) were separated by SDS-PAGE and immunoblotted with anti-GPR151 (Cat# [TA811793])(1:5000). Positive lysates [LY405184] (100ug) and [LC405184] (20ug) can be purchased separately from OriGene.



Western blot analysis of extracts (35ug) from HUVEC cell line by using anti-GPR151 monoclonal antibody (1:500).