

## Product datasheet for **TA811793AM**

### GPCR 2037 (GPR151) Mouse Monoclonal Antibody (Biotin conjugated) [Clone ID: OTI3D1]

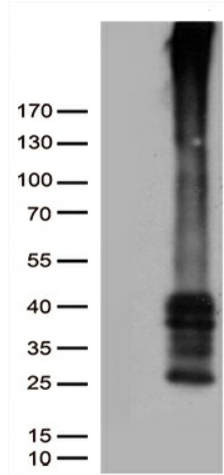
#### Product data:

Product Type:	Primary Antibodies
Clone Name:	OTI3D1
Applications:	WB
Recommended Dilution:	WB 1:500
Reactivity:	Human
Host:	Mouse
Isotype:	IgG1
Clonality:	Monoclonal
Immunogen:	Full length human recombinant protein of human GPR151 (NP_919227) produced in HEK293T cell.
Formulation:	PBS (pH 7.3) containing 1% BSA, 50% glycerol and 0.02% sodium azide.
Concentration:	0.5 mg/ml
Purification:	Purified from mouse ascites fluids or tissue culture supernatant by affinity chromatography (protein A/G)
Conjugation:	Biotin
Storage:	Store at -20°C as received.
Stability:	Stable for 12 months from date of receipt.
Predicted Protein Size:	46.5 kDa
Gene Name:	G protein-coupled receptor 151
Database Link:	<a href="#">NP_919227</a> <a href="#">Entrez Gene 134391 Human</a> <a href="#">Q8TDV0</a>
Background:	Orphan receptor. [UniProtKB/Swiss-Prot Function]
Synonyms:	GALR4; GALRL; GPCR; PGR7
Protein Families:	Druggable Genome, Transmembrane

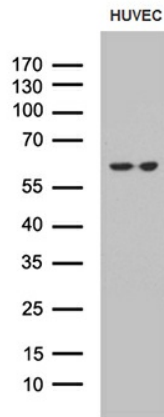


[View online »](#)

**Product images:**



HEK293T cells were transfected with the pCMV6-ENTRY control (Cat# [PS100001], Left lane) or pCMV6-ENTRY GPR151 (Cat# [RC220856], Right lane) cDNA for 48 hrs and lysed. Equivalent amounts of cell lysates (5 ug per lane) were separated by SDS-PAGE and immunoblotted with anti-GPR151 (Cat# [TA811793])(1:5000). Positive lysates [LY405184] (100ug) and [LC405184] (20ug) can be purchased separately from OriGene.



Western blot analysis of extracts (35ug) from HUVEC cell line by using anti-GPR151 monoclonal antibody (1:500).