

Product datasheet for **TA811791S**

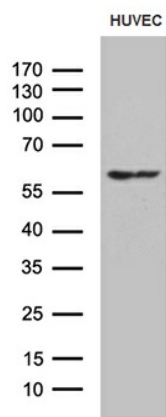
GPCR 2037 (GPR151) Mouse Monoclonal Antibody [Clone ID: OTI1D8]

Product data:

Product Type:	Primary Antibodies
Clone Name:	OTI1D8
Applications:	WB
Recommended Dilution:	WB 1:500~2000
Reactivity:	Human
Host:	Mouse
Isotype:	IgG1
Clonality:	Monoclonal
Immunogen:	Full length human recombinant protein of human GPR151 (NP_919227) produced in HEK293T cell.
Formulation:	PBS (pH 7.3) containing 1% BSA, 50% glycerol and 0.02% sodium azide.
Concentration:	1 mg/ml
Purification:	Purified from mouse ascites fluids or tissue culture supernatant by affinity chromatography (protein A/G)
Conjugation:	Unconjugated
Storage:	Store at -20°C as received.
Stability:	Stable for 12 months from date of receipt.
Predicted Protein Size:	46.5 kDa
Gene Name:	G protein-coupled receptor 151
Database Link:	NP_919227 Entrez Gene 134391 Human Q8TDV0
Background:	Orphan receptor. [UniProtKB/Swiss-Prot Function]
Synonyms:	GALR4; GALRL; GPCR; PGR7
Protein Families:	Druggable Genome, Transmembrane



[View online »](#)

Product images:

Western blot analysis of extracts (35ug) from HUVEC cell line by using anti-GPR151 monoclonal antibody (1:500).