

Product datasheet for **TA811780BM**

ATP5ME Mouse Monoclonal Antibody (HRP conjugated) [Clone ID: OTI1E6]

Product data:

Product Type:	Primary Antibodies
Clone Name:	OTI1E6
Applications:	IHC, WB
Recommended Dilution:	WB 1:500~2000, IHC 1:500
Reactivity:	Human
Host:	Mouse
Isotype:	IgG1
Clonality:	Monoclonal
Immunogen:	Full length human recombinant protein of human ATP5I (NP_009031) produced in E.coli.
Formulation:	PBS (pH 7.3) containing 1% BSA, 50% glycerol.
Concentration:	0.5 mg/ml
Purification:	Purified from mouse ascites fluids or tissue culture supernatant by affinity chromatography (protein A/G)
Conjugation:	HRP
Storage:	Store at -20°C as received.
Stability:	Stable for 12 months from date of receipt.
Predicted Protein Size:	7.8 kDa
Gene Name:	ATP synthase, H ⁺ transporting, mitochondrial Fo complex subunit E
Database Link:	NP_009031 Entrez Gene 521 Human P56385



[View online »](#)

Background:

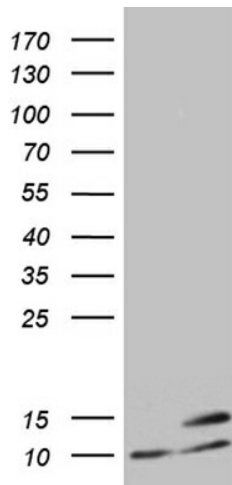
Mitochondrial ATP synthase catalyzes ATP synthesis, utilizing an electrochemical gradient of protons across the inner membrane during oxidative phosphorylation. It is composed of two linked multi-subunit complexes: the soluble catalytic core, F1, and the membrane-spanning component, Fo, which comprises the proton channel. The F1 complex consists of 5 different subunits (alpha, beta, gamma, delta, and epsilon) assembled in a ratio of 3 alpha, 3 beta, and a single representative of the other 3. The Fo seems to have nine subunits (a, b, c, d, e, f, g, F6 and 8). This gene encodes the e subunit of the Fo complex. Alternative splicing results in multiple transcript variants. [provided by RefSeq, Jun 2010]

Synonyms:

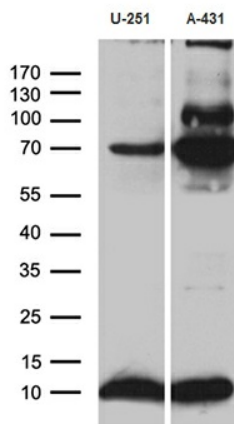
ATP5K

Protein Pathways:

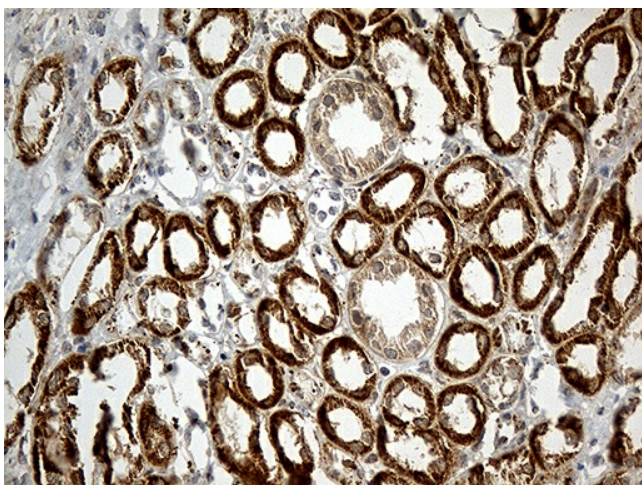
Metabolic pathways, Oxidative phosphorylation

Product images:


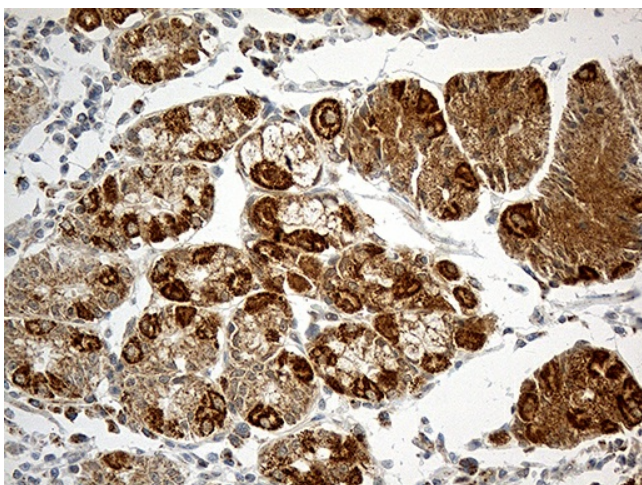
HEK293T cells were transfected with the pCMV6-ENTRY control (Cat# [PS100001], Left lane) or pCMV6-ENTRY ATP5I (Cat# [RC215565], Right lane) cDNA for 48 hrs and lysed. Equivalent amounts of cell lysates (5 ug per lane) were separated by SDS-PAGE and immunoblotted with anti-ATP5I (Cat# [TA811780])(1:2000). Positive lysates [LY416195] (100ug) and [LC416195] (20ug) can be purchased separately from OriGene.



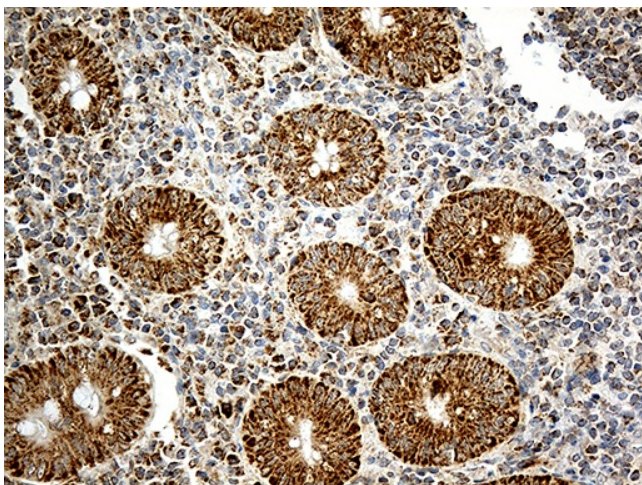
Western blot analysis of extracts (35ug) from 2 different cell lines by using anti-ATP5I monoclonal antibody (1:500).



Immunohistochemical staining of paraffin-embedded Human Kidney tissue within the normal limits using anti-ATP5I mouse monoclonal antibody. (Heat-induced epitope retrieval by 1mM EDTA in 10mM Tris buffer (pH8.5) at 120°C for 3min, [TA811780]) (1:500)



Immunohistochemical staining of paraffin-embedded Human gastric tissue within the normal limits using anti-ATP5I mouse monoclonal antibody. (Heat-induced epitope retrieval by 1mM EDTA in 10mM Tris buffer (pH8.5) at 120°C for 3min, [TA811780]) (1:500)



Immunohistochemical staining of paraffin-embedded Human appendix tissue within the normal limits using anti-ATP5I mouse monoclonal antibody. (Heat-induced epitope retrieval by 1mM EDTA in 10mM Tris buffer (pH8.5) at 120°C for 3min, [TA811780]) (1:500)