

## Product datasheet for **TA811778AM**

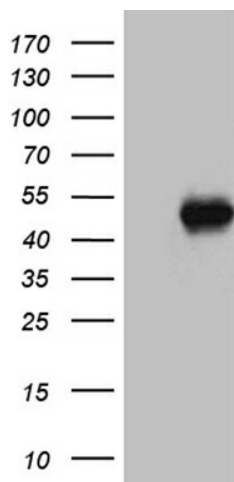
### **BPOZ (ABTB1) Mouse Monoclonal Antibody (Biotin conjugated) [Clone ID: OTI3G8]**

#### **Product data:**

Product Type:	Primary Antibodies
Clone Name:	OTI3G8
Applications:	WB
Recommended Dilution:	WB 1:500
Reactivity:	Human, Mouse, Rat
Host:	Mouse
Isotype:	IgG1
Clonality:	Monoclonal
Immunogen:	Full length human recombinant protein of human ABTB1 (NP_115937) produced in E.coli.
Formulation:	PBS (pH 7.3) containing 1% BSA, 50% glycerol and 0.02% sodium azide.
Concentration:	0.5 mg/ml
Purification:	Purified from mouse ascites fluids or tissue culture supernatant by affinity chromatography (protein A/G)
Conjugation:	Biotin
Storage:	Store at -20°C as received.
Stability:	Stable for 12 months from date of receipt.
Predicted Protein Size:	37.4 kDa
Gene Name:	ankyrin repeat and BTB domain containing 1
Database Link:	<a href="#">NP_115937</a> <a href="#">Entrez Gene 80283 Mouse</a> <a href="#">Entrez Gene 297432 Rat</a> <a href="#">Entrez Gene 80325 Human</a> <a href="#">Q969K4</a>
Background:	This gene encodes a protein with an ankyrin repeat region and two BTB/POZ domains, which are thought to be involved in protein-protein interactions. Expression of this gene is activated by the phosphatase and tensin homolog, a tumor suppressor. Alternate splicing results in three transcript variants. [provided by RefSeq, Mar 2010]
Synonyms:	BPOZ; BTB3; BTBD21; EF1ABP; PP2259



[View online »](#)

**Product images:**

HEK293T cells were transfected with the pCMV6-ENTRY control (Cat# [PS100001], Left lane) or pCMV6-ENTRY ABTB1 (Cat# [RC204306], Right lane) cDNA for 48 hrs and lysed. Equivalent amounts of cell lysates (5 ug per lane) were separated by SDS-PAGE and immunoblotted with anti-ABTB1 (Cat# [TA811778])(1:500).