

## Product datasheet for **TA811770AM**

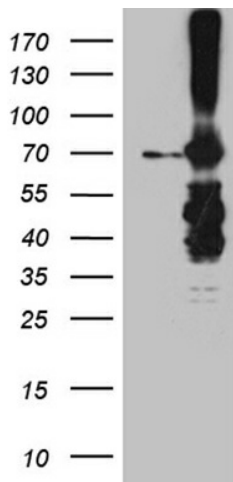
### **METTL3 Mouse Monoclonal Antibody (Biotin conjugated) [Clone ID: OTI1B7]**

#### **Product data:**

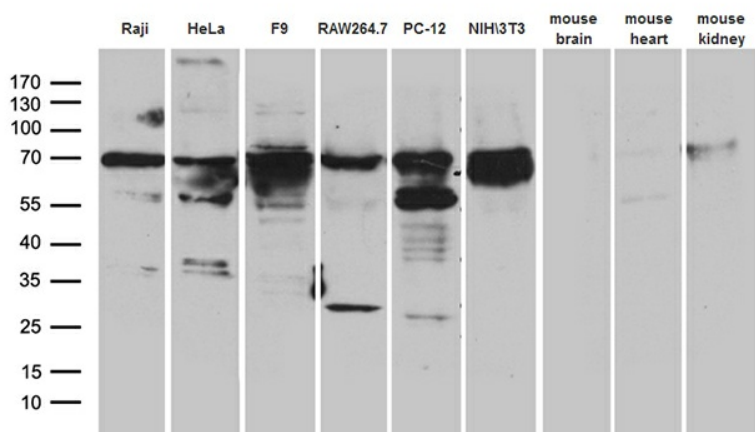
Product Type:	Primary Antibodies
Clone Name:	OTI1B7
Applications:	WB
Recommended Dilution:	WB 1:500~2000
Reactivity:	Human, Rat, Mouse
Host:	Mouse
Isotype:	IgG1
Clonality:	Monoclonal
Immunogen:	Human recombinant protein fragment corresponding to amino acids 1-284 of human METTL3 (NP_062826) produced in E.coli.
Formulation:	PBS (pH 7.3) containing 1% BSA, 50% glycerol and 0.02% sodium azide.
Concentration:	0.5 mg/ml
Purification:	Purified from mouse ascites fluids or tissue culture supernatant by affinity chromatography (protein A/G)
Conjugation:	Biotin
Storage:	Store at -20°C as received.
Stability:	Stable for 12 months from date of receipt.
Predicted Protein Size:	64.3 kDa
Gene Name:	methyltransferase like 3
Database Link:	<a href="#">NP_062826</a> <a href="#">Entrez Gene 56335 Mouse</a> <a href="#">Entrez Gene 361035 Rat</a> <a href="#">Entrez Gene 56339 Human</a> <a href="#">Q86U44</a>
Background:	This gene encodes the 70 kDa subunit of MT-A which is part of N6-adenosine-methyltransferase. This enzyme is involved in the posttranscriptional methylation of internal adenosine residues in eukaryotic mRNAs, forming N6-methyladenosine. [provided by RefSeq, Jul 2008]
Synonyms:	IME4; M6A; MT-A70; Spo8



[View online »](#)

**Product images:**


HEK293T cells were transfected with the pCMV6-ENTRY control (Cat# [PS100001], Left lane) or pCMV6-ENTRY METTL3 (Cat# [RC200869], Right lane) cDNA for 48 hrs and lysed. Equivalent amounts of cell lysates (5 ug per lane) were separated by SDS-PAGE and immunoblotted with anti-METTL3 (Cat# [TA811770])(1:2000). Positive lysates [LY412720] (100ug) and [LC412720] (20ug) can be purchased separately from OriGene.



Western blot analysis of extracts (35ug) from 6 different cell lines and 3 different tissue lysates by using anti-METTL3 monoclonal antibody (1:500).