

## Product datasheet for **TA811768S**

### **MBD1 Mouse Monoclonal Antibody [Clone ID: OTI2D7]**

#### **Product data:**

Product Type:	Primary Antibodies
Clone Name:	OTI2D7
Applications:	WB
Recommended Dilution:	WB 1:2000
Reactivity:	Human
Host:	Mouse
Isotype:	IgG1
Clonality:	Monoclonal
Immunogen:	Human recombinant protein fragment corresponding to amino acids 222-556 of human MBD1 (NP_056723) produced in E.coli.
Formulation:	PBS (pH 7.3) containing 1% BSA, 50% glycerol and 0.02% sodium azide.
Concentration:	1 mg/ml
Purification:	Purified from mouse ascites fluids or tissue culture supernatant by affinity chromatography (protein A/G)
Conjugation:	Unconjugated
Storage:	Store at -20°C as received.
Stability:	Stable for 12 months from date of receipt.
Predicted Protein Size:	61.1 kDa
Gene Name:	methyl-CpG binding domain protein 1
Database Link:	<a href="#">NP_056723</a> <a href="#">Entrez Gene 4152 Human</a> <a href="#">Q9UIS9</a>



[View online »](#)

**Background:**

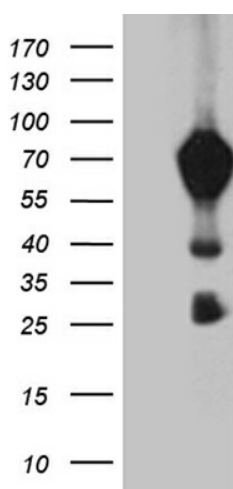
The protein encoded by this gene is a member of a family of nuclear proteins related by the presence of a methyl-CpG binding domain (MBD). These proteins are capable of binding specifically to methylated DNA, and some members can also repress transcription from methylated gene promoters. This protein contains multiple domains: MBD at the N-terminus that functions both in binding to methylated DNA and in protein interactions; several CXXC-type zinc finger domains that mediate binding to non-methylated CpG dinucleotides; transcriptional repression domain (TRD) at the C-terminus that is involved in transcription repression and in protein interactions. Numerous alternatively spliced transcript variants encoding different isoforms have been noted for this gene. [provided by RefSeq, Feb 2011]

**Synonyms:**

CXXC3; PCM1; RFT

**Protein Families:**

Druggable Genome, Transcription Factors

**Product images:**

HEK293T cells were transfected with the pCMV6-ENTRY control (Left lane) or pCMV6-ENTRY MBD1 ([RC224185], Right lane) cDNA for 48 hrs and lysed. Equivalent amounts of cell lysates (5 ug per lane) were separated by SDS-PAGE and immunoblotted with anti-MBD1 (1:2000). Positive lysates [LY414373] (100ug) and [LC414373] (20ug) can be purchased separately from OriGene.