

Product datasheet for **TA811763M**

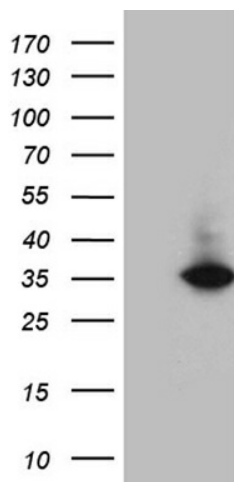
RWDD3 Mouse Monoclonal Antibody [Clone ID: OTI10H4]

Product data:

Product Type:	Primary Antibodies
Clone Name:	OTI10H4
Applications:	WB
Recommended Dilution:	WB 1:2000
Reactivity:	Human
Host:	Mouse
Isotype:	IgG2a
Clonality:	Monoclonal
Immunogen:	Human recombinant protein fragment corresponding to amino acids 1-267 of human RWDD3 (NP_056300) produced in E.coli.
Formulation:	PBS (pH 7.3) containing 1% BSA, 50% glycerol and 0.02% sodium azide.
Concentration:	1 mg/ml
Purification:	Purified from mouse ascites fluids or tissue culture supernatant by affinity chromatography (protein A/G)
Conjugation:	Unconjugated
Storage:	Store at -20°C as received.
Stability:	Stable for 12 months from date of receipt.
Predicted Protein Size:	30.3 kDa
Gene Name:	RWD domain containing 3
Database Link:	NP_056300 Entrez Gene 25950 Human Q9Y3V2
Synonyms:	RSUME



[View online »](#)

Product images:

HEK293T cells were transfected with the pCMV6-ENTRY control (Cat# [PS100001], Left lane) or pCMV6-ENTRY RWDD3 (Cat# [RC217602], Right lane) cDNA for 48 hrs and lysed. Equivalent amounts of cell lysates (5 ug per lane) were separated by SDS-PAGE and immunoblotted with anti-RWDD3 (Cat# [TA811763])(1:2000). Positive lysates [LY414519] (100ug) and [LC414519] (20ug) can be purchased separately from OriGene.