

## Product datasheet for **TA811758AM**

### **FISH (SH3PXD2A) Mouse Monoclonal Antibody (Biotin conjugated) [Clone ID: OTI1H9]**

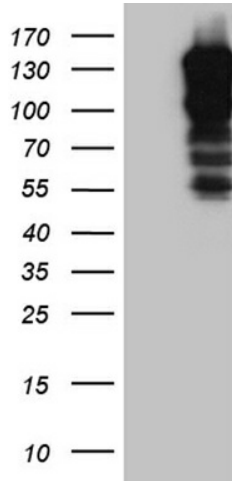
#### **Product data:**

Product Type:	Primary Antibodies
Clone Name:	OTI1H9
Applications:	WB
Recommended Dilution:	WB 1:2000
Reactivity:	Human, Mouse, Rat
Host:	Mouse
Isotype:	IgG1
Clonality:	Monoclonal
Immunogen:	Human recombinant protein fragment corresponding to amino acids 299-395 of human SH3PXD2A (NP_055446) produced in E.coli.
Formulation:	PBS (pH 7.3) containing 1% BSA, 50% glycerol and 0.02% sodium azide.
Concentration:	0.5 mg/ml
Purification:	Purified from mouse ascites fluids or tissue culture supernatant by affinity chromatography (protein A/G)
Conjugation:	Biotin
Storage:	Store at -20°C as received.
Stability:	Stable for 12 months from date of receipt.
Predicted Protein Size:	121.7 kDa
Gene Name:	SH3 and PX domains 2A
Database Link:	<a href="#">NP_055446</a> <a href="#">Entrez Gene 14218 Mouse</a> <a href="#">Entrez Gene 309460 Rat</a> <a href="#">Entrez Gene 9644 Human</a> <a href="#">Q5TCZ1</a>
Synonyms:	FISH; SH3MD1; TKS5



[View online »](#)

## Product images:



HEK293T cells were transfected with the pCMV6-ENTRY control (Left lane) or pCMV6-ENTRY SH3PXD2A ([RC217487], Right lane) cDNA for 48 hrs and lysed. Equivalent amounts of cell lysates (5 ug per lane) were separated by SDS-PAGE and immunoblotted with anti-SH3PXD2A (1:2000). Positive lysates [LY415151] (100ug) and [LC415151] (20ug) can be purchased separately from OriGene.