

## Product datasheet for **TA811757S**

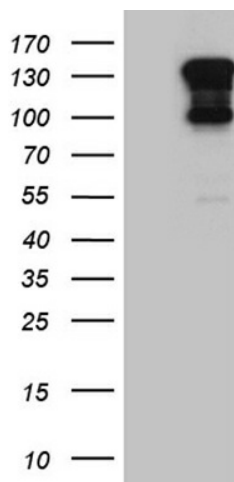
### FISH (SH3PXD2A) Mouse Monoclonal Antibody [Clone ID: OTI1F5]

#### Product data:

|                         |  |
|-------------------------|--|
| Product Type:           | Primary Antibodies   |
| Clone Name:             | OTI1F5   |
| Applications:           | WB   |
| Recommended Dilution:   | WB 1:2000  |
| Reactivity:             | Human, Mouse, Rat  |
| Host:                   | Mouse  |
| Isotype:                | IgG1   |
| Clonality:              | Monoclonal   |
| Immunogen:              | Human recombinant protein fragment corresponding to amino acids 299-395 of human SH3PXD2A (NP_055446) produced in E.coli.  |
| Formulation:            | PBS (pH 7.3) containing 1% BSA, 50% glycerol and 0.02% sodium azide.   |
| Concentration:          | 1 mg/ml  |
| Purification:           | Purified from mouse ascites fluids or tissue culture supernatant by affinity chromatography (protein A/G)  |
| Conjugation:            | Unconjugated   |
| Storage:                | Store at -20°C as received.  |
| Stability:              | Stable for 12 months from date of receipt.   |
| Predicted Protein Size: | 121.7 kDa  |
| Gene Name:              | SH3 and PX domains 2A  |
| Database Link:          | <a href="#">NP_055446</a><br><a href="#">Entrez Gene 14218 Mouse</a> <a href="#">Entrez Gene 309460 Rat</a> <a href="#">Entrez Gene 9644 Human</a><br><a href="#">Q5TCZ1</a> |
| Synonyms:               | FISH; SH3MD1; TKS5   |



[View online »](#)

**Product images:**

HEK293T cells were transfected with the pCMV6-ENTRY control (Left lane) or pCMV6-ENTRY SH3PXD2A ([RC217487], Right lane) cDNA for 48 hrs and lysed. Equivalent amounts of cell lysates (5 ug per lane) were separated by SDS-PAGE and immunoblotted with anti-SH3PXD2A (1:2000). Positive lysates [LY415151] (100ug) and [LC415151] (20ug) can be purchased separately from OriGene.