

## Product datasheet for **TA811750BM**

### **GPR26 Mouse Monoclonal Antibody (HRP conjugated) [Clone ID: OTI3D10]**

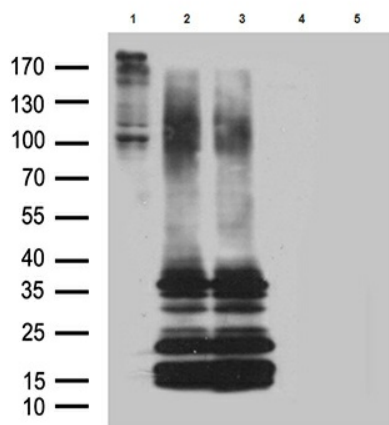
#### **Product data:**

<b>Product Type:</b>	Primary Antibodies
<b>Clone Name:</b>	OTI3D10
<b>Applications:</b>	WB
<b>Recommended Dilution:</b>	WB 1:500
<b>Reactivity:</b>	Human, Rat, Mouse
<b>Host:</b>	Mouse
<b>Isotype:</b>	IgG2b
<b>Clonality:</b>	Monoclonal
<b>Immunogen:</b>	Synthetic peptide (the amino acid sequence is considered to be commercially sensitive) within Human GPR26 (NP_703143). The exact sequence is proprietary.
<b>Formulation:</b>	PBS (pH 7.3) containing 1% BSA, 50% glycerol.
<b>Concentration:</b>	0.5 mg/ml
<b>Purification:</b>	Purified from mouse ascites fluids or tissue culture supernatant by affinity chromatography (protein A/G)
<b>Conjugation:</b>	HRP
<b>Storage:</b>	Store at -20°C as received.
<b>Stability:</b>	Stable for 12 months from date of receipt.
<b>Predicted Protein Size:</b>	37.4 kDa
<b>Gene Name:</b>	G protein-coupled receptor 26
<b>Database Link:</b>	<a href="#">NP_703143</a> <a href="#">Entrez Gene 192153 Rat</a> <a href="#">Entrez Gene 233919 Mouse</a> <a href="#">Entrez Gene 2849 Human</a> <a href="#">Q8NDV2</a>
<b>Synonyms:</b>	DKFZp761H2121; FLJ33774; MGC138216
<b>Protein Families:</b>	Druggable Genome, GPCR, Transmembrane



[View online »](#)

## Product images:



Western blot analysis of lysates from 293T cells transfected with (1)pcDNA4/To-hGPR26, (2)pcDNA3.1-mGPR26, (3)pcDNA3.1-rGPR26, (4)pcDNA3.1, (5)pcDNA4/To plasmids using anti-GPR26 Mouse monoclonal antibody (1:500).