

Product datasheet for **TA811750**

GPR26 Mouse Monoclonal Antibody [Clone ID: OTI3D10]

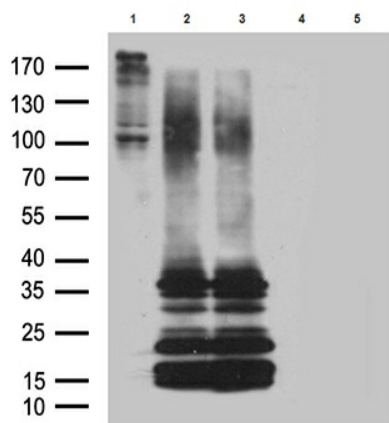
Product data:

Product Type:	Primary Antibodies
Clone Name:	OTI3D10
Applications:	WB
Recommended Dilution:	WB 1:500
Reactivity:	Human, Rat, Mouse
Host:	Mouse
Isotype:	IgG2b
Clonality:	Monoclonal
Immunogen:	Synthetic peptide (the amino acid sequence is considered to be commercially sensitive) within Human GPR26 (NP_703143). The exact sequence is proprietary.
Formulation:	PBS (pH 7.3) containing 1% BSA, 50% glycerol and 0.02% sodium azide.
Concentration:	1 mg/ml
Purification:	Purified from mouse ascites fluids or tissue culture supernatant by affinity chromatography (protein A/G)
Conjugation:	Unconjugated
Storage:	Store at -20°C as received.
Stability:	Stable for 12 months from date of receipt.
Predicted Protein Size:	37.4 kDa
Gene Name:	G protein-coupled receptor 26
Database Link:	NP_703143 Entrez Gene 192153 Rat Entrez Gene 233919 Mouse Entrez Gene 2849 Human Q8NDV2
Synonyms:	DKFZp761H2121; FLJ33774; MGC138216
Protein Families:	Druggable Genome, GPCR, Transmembrane



[View online »](#)

Product images:



Western blot analysis of lysates from 293T cells transfected with (1)pcDNA4/To-hGPR26, (2)pcDNA3.1-mGPR26, (3)pcDNA3.1-rGPR26, (4)pcDNA3.1, (5)pcDNA4/To plasmids using anti-GPR26 Mouse monoclonal antibody (1:500).