

Product datasheet for **TA811746M**

Podoplanin (PDPN) Mouse Monoclonal Antibody [Clone ID: OTI7B4]

Product data:

Product Type:	Primary Antibodies
Clone Name:	OTI7B4
Applications:	FC, IHC, WB
Recommended Dilution:	WB 1:500
Reactivity:	Human
Host:	Mouse
Isotype:	IgG1
Clonality:	Monoclonal
Immunogen:	Human recombinant protein fragment corresponding to amino acids 23-131 of human PDPN (NP_006465) produced in E.coli.
Formulation:	PBS (pH 7.3) containing 1% BSA, 50% glycerol and 0.02% sodium azide.
Concentration:	1 mg/ml
Purification:	Purified from mouse ascites fluids or tissue culture supernatant by affinity chromatography (protein A/G)
Conjugation:	Unconjugated
Storage:	Store at -20°C as received.
Stability:	Stable for 12 months from date of receipt.
Predicted Protein Size:	24.7 kDa
Gene Name:	podoplanin
Database Link:	NP_006465 Entrez Gene 10630 Human Q86YL7

[View online »](#)

Background:

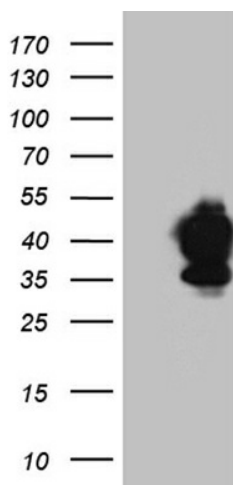
This gene encodes a type-I integral membrane glycoprotein with diverse distribution in human tissues. The physiological function of this protein may be related to its mucin-type character. The homologous protein in other species has been described as a differentiation antigen and influenza-virus receptor. The specific function of this protein has not been determined but it has been proposed as a marker of lung injury. Alternatively spliced transcript variants encoding different isoforms have been identified. [provided by RefSeq, Jul 2008]

Synonyms:

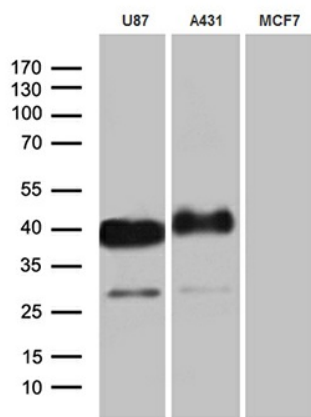
AGGRUS; GP36; Gp38; GP40; HT1A-1; OTS8; PA2.26; T1A; T1A-2; T1A2; T11A

Protein Families:

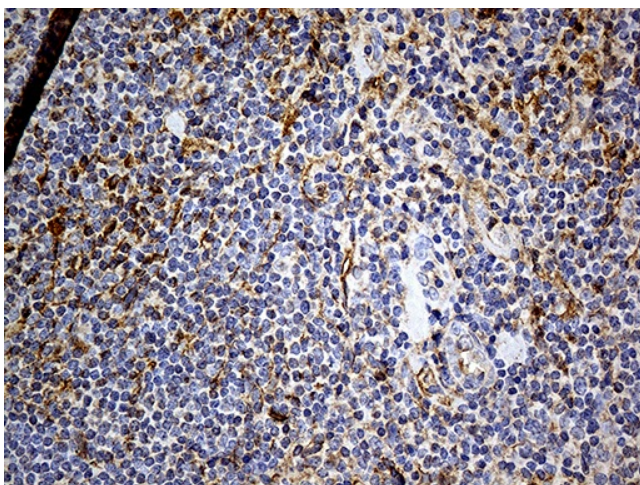
Druggable Genome, Transmembrane

Product images:


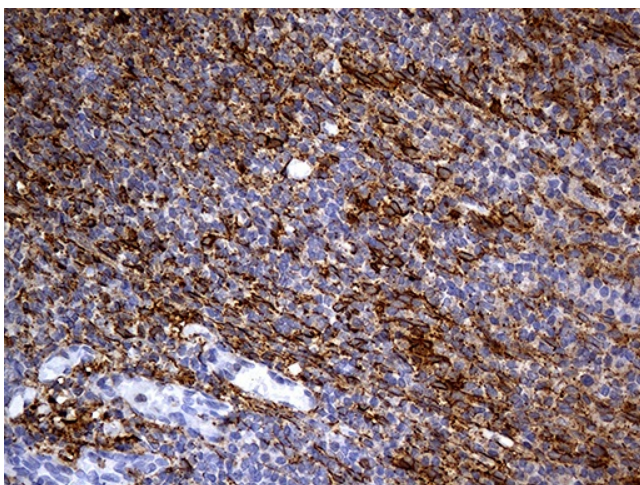
HEK293T cells were transfected with the pCMV6-ENTRY control (Cat# [PS100001], Left lane) or pCMV6-ENTRY PDPN (Cat# [RC224811], Right lane) cDNA for 48 hrs and lysed. Equivalent amounts of cell lysates (5 ug per lane) were separated by SDS-PAGE and immunoblotted with anti-PDPN (Cat# [TA811746])(1:500). Positive lysates [LY429296] (100ug) and [LC429296] (20ug) can be purchased separately from OriGene.



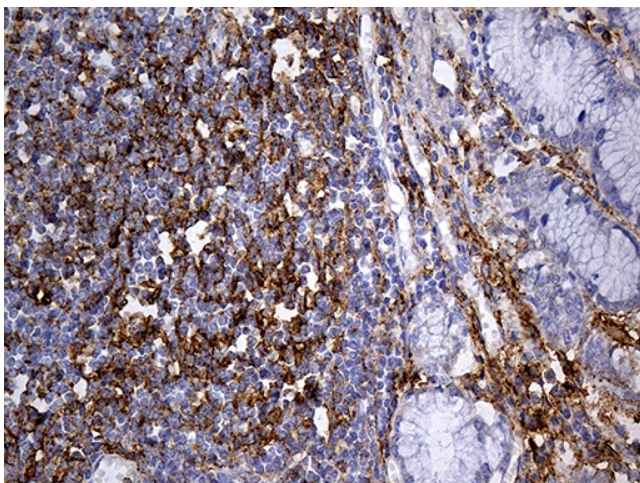
Western blot analysis of extracts (35ug) from 3 different cell line by using anti-PDPN monoclonal antibody (1:500).



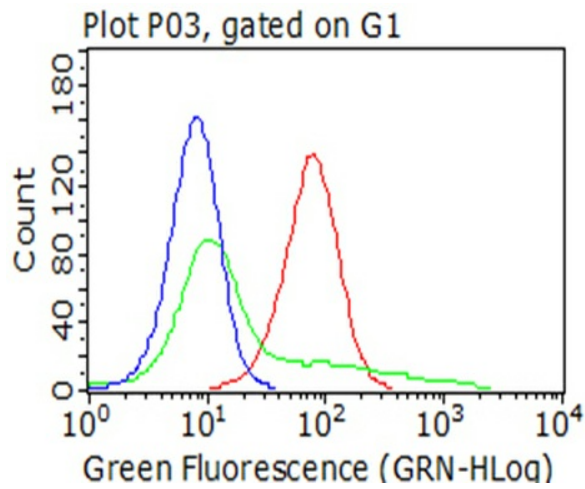
Immunohistochemical staining of paraffin-embedded Human lymphoma tissue using anti-PDPN mouse monoclonal antibody. Heat-induced epitope retrieval by EDTA solution buffer pH 8.0 at 120°C for 3 min.



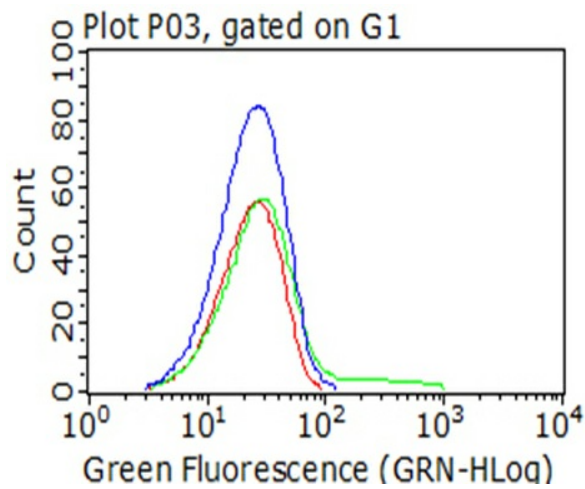
Immunohistochemical staining of paraffin-embedded Human tonsil within the normal limits using anti-PDPN mouse monoclonal antibody. Heat-induced epitope retrieval by EDTA solution buffer pH 8.0 at 120°C for 3 min.



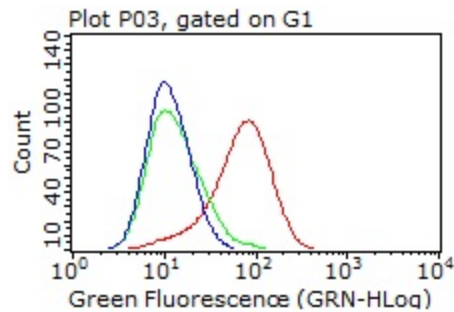
Immunohistochemical staining of paraffin-embedded Human Gastric Carcinoma using anti-PDPN mouse monoclonal antibody. Heat-induced epitope retrieval by EDTA solution buffer pH 8.0 at 120°C for 3 min.



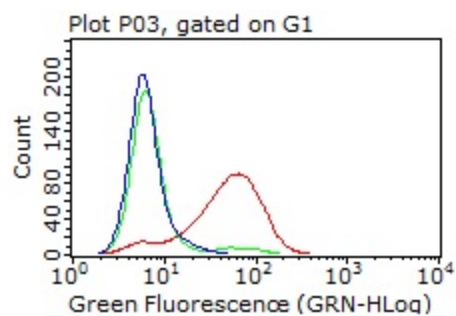
Flow cytometric analysis of living 293T cells, using anti-PDPN antibody ([TA811746]), (red), compared to an IgG isotype control, (green), and negative control (PBS), (blue) (1:100).



Flow cytometric analysis of living MCF7 cells, using anti-PDPN antibody ([TA811746]), (red), compared to an IgG isotype control, (green), and negative control (PBS), (blue) (1:100).



Flow cytometric Analysis of living U87MG cells, using anti-PDPN antibody ([TA811746]), (red), compared to an IgG isotype control, (green), and negative control (PBS), (blue) (1:100).



Flow cytometric analysis of living A431 cells, using anti-PDPN antibody ([TA811746]), (red), compared to an IgG isotype control, (green), and negative control (PBS), (blue) (1:100).