

## Product datasheet for **TA811741AM**

### **HOMER1 Mouse Monoclonal Antibody (Biotin conjugated) [Clone ID: OTI3G5]**

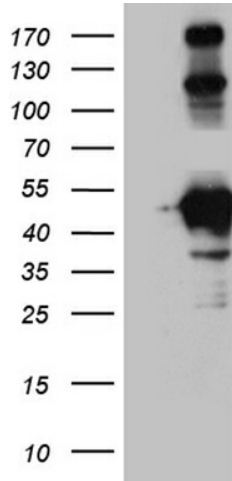
#### **Product data:**

Product Type:	Primary Antibodies
Clone Name:	OTI3G5
Applications:	WB
Recommended Dilution:	WB 1:500~2000
Reactivity:	Human, Rat, Mouse
Host:	Mouse
Isotype:	IgG2b
Clonality:	Monoclonal
Immunogen:	Human recombinant protein fragment corresponding to amino acids 1-354 of human HOMER1 (NP_004263) produced in E.coli.
Formulation:	PBS (pH 7.3) containing 1% BSA, 50% glycerol and 0.02% sodium azide.
Concentration:	0.5 mg/ml
Purification:	Purified from mouse ascites fluids or tissue culture supernatant by affinity chromatography (protein A/G)
Conjugation:	Biotin
Storage:	Store at -20°C as received.
Stability:	Stable for 12 months from date of receipt.
Predicted Protein Size:	40.1 kDa
Gene Name:	homer scaffolding protein 1
Database Link:	<a href="#">NP_004263</a> <a href="#">Entrez Gene 26556 Mouse</a> <a href="#">Entrez Gene 29546 Rat</a> <a href="#">Entrez Gene 9456 Human</a> <a href="#">Q86YM7</a>
Background:	This gene encodes a member of the homer family of dendritic proteins. Members of this family regulate group 1 metabotropic glutamate receptor function. [provided by RefSeq, Jul 2008]
Synonyms:	HOMER; HOMER1A; HOMER1B; HOMER1C; SYN47; Ves-1
Protein Families:	Druggable Genome

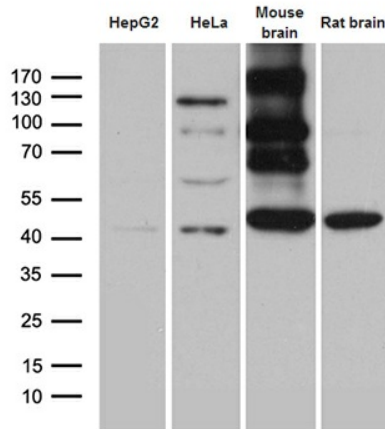


[View online »](#)

**Product images:**



HEK293T cells were transfected with the pCMV6-ENTRY control (Left lane) or pCMV6-ENTRY HOMER1 ([RC215892], Right lane) cDNA for 48 hrs and lysed. Equivalent amounts of cell lysates (5 ug per lane) were separated by SDS-PAGE and immunoblotted with anti-HOMER. Positive lysates [LY418101] (100ug) and [LC418101] (20ug) can be purchased separately from OriGene.



Western blot analysis of extracts (35ug) from 2 cell lines and 2 tissue lysates by using anti-HOMER1 monoclonal antibody (1:500).