

Product datasheet for **TA811737S**

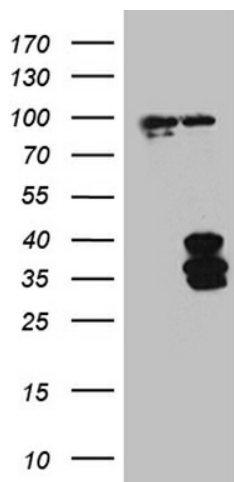
Interleukin 34 (IL34) Mouse Monoclonal Antibody [Clone ID: OTI5E1]

Product data:

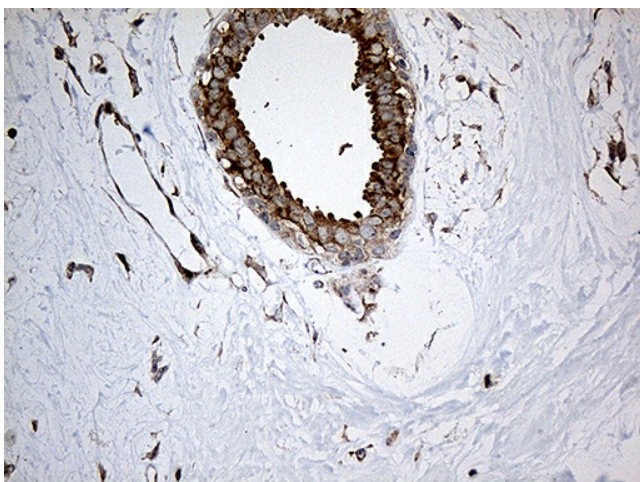
Product Type:	Primary Antibodies
Clone Name:	OTI5E1
Applications:	IHC, WB
Recommended Dilution:	WB 1:2000, IHC 1:1000
Reactivity:	Human
Host:	Mouse
Isotype:	IgG2a
Clonality:	Monoclonal
Immunogen:	Human recombinant protein fragment corresponding to amino acids 77-242 of human IL34 (NP_689669) produced in E.coli.
Formulation:	PBS (pH 7.3) containing 1% BSA, 50% glycerol and 0.02% sodium azide.
Concentration:	1 mg/ml
Purification:	Purified from mouse ascites fluids or tissue culture supernatant by affinity chromatography (protein A/G)
Conjugation:	Unconjugated
Storage:	Store at -20°C as received.
Stability:	Stable for 12 months from date of receipt.
Predicted Protein Size:	27.3 kDa
Gene Name:	interleukin 34
Database Link:	NP_689669 Entrez Gene 146433 Human Q6ZMJ4
Background:	Interleukin-34 is a cytokine that promotes the differentiation and viability of monocytes and macrophages through the colony-stimulating factor-1 receptor (CSF1R; MIM 164770) (Lin et al., 2008 [PubMed 18467591]). [supplied by OMIM, May 2008]
Synonyms:	C16orf77; IL-34



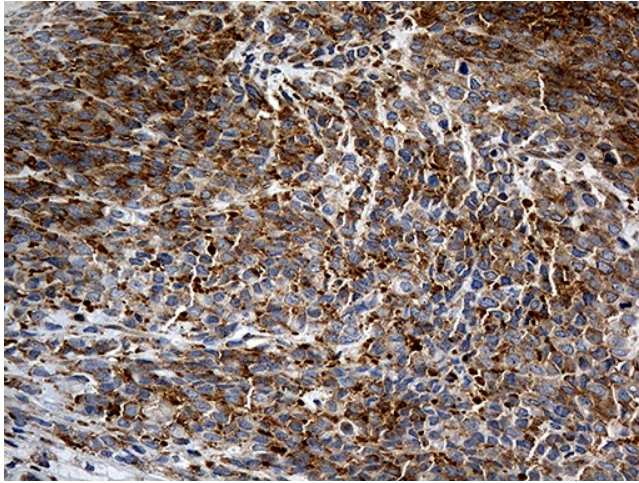
[View online »](#)

Product images:

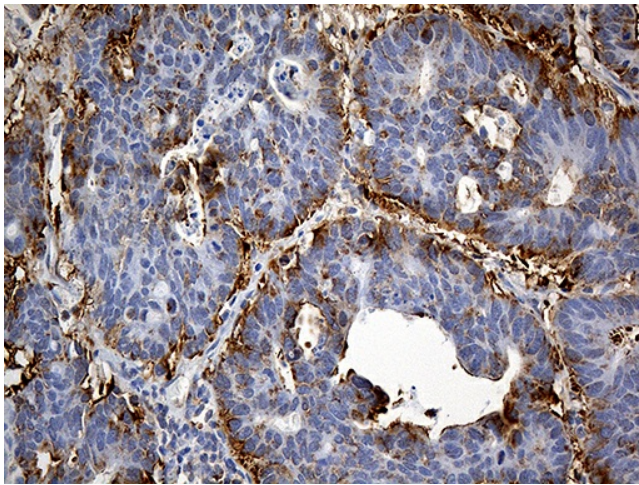
HEK293T cells were transfected with the pCMV6-ENTRY control (Cat# [PS100001], Left lane) or pCMV6-ENTRY IL34 (Cat# [RC206629], Right lane) cDNA for 48 hrs and lysed. Equivalent amounts of cell lysates (5 ug per lane) were separated by SDS-PAGE and immunoblotted with anti-IL34 (Cat# [TA811737])(1:2000). Positive lysates [LY403469] (100ug) and [LC403469] (20ug) can be purchased separately from OriGene.



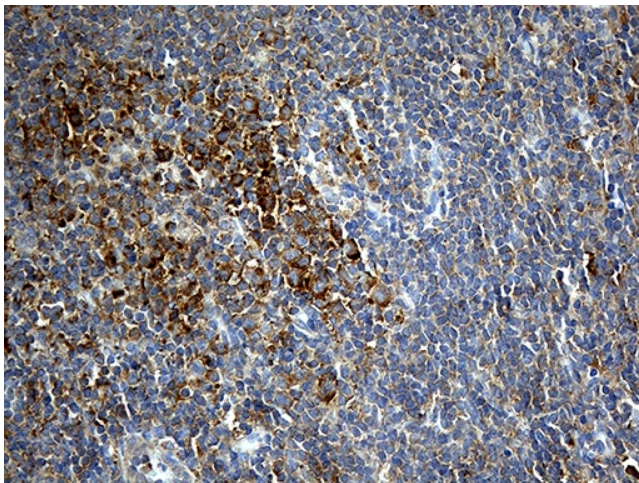
Immunohistochemical staining of paraffin-embedded Human breast tissue within the normal limits using anti-IL34 mouse monoclonal antibody. (Heat-induced epitope retrieval by 1mM EDTA in 10mM Tris buffer (pH8.5) at 120°C for 3min, [TA811737]) (1:1000)



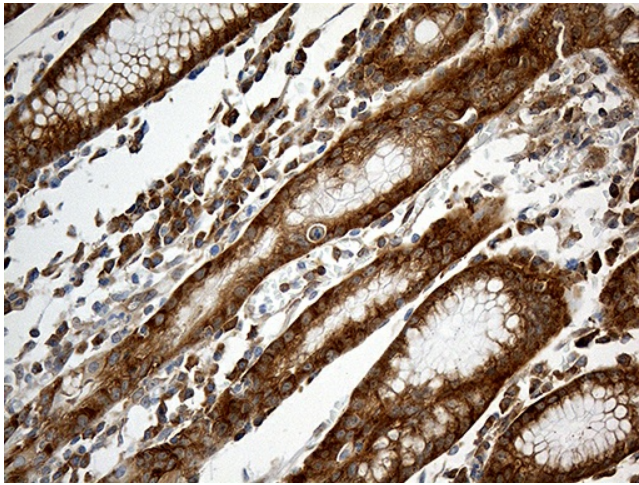
Immunohistochemical staining of paraffin-embedded Adenocarcinoma of Human breast tissue using anti-IL34 mouse monoclonal antibody. (Heat-induced epitope retrieval by 1mM EDTA in 10mM Tris buffer (pH8.5) at 120°C for 3min, [TA811737]) (1:1000)



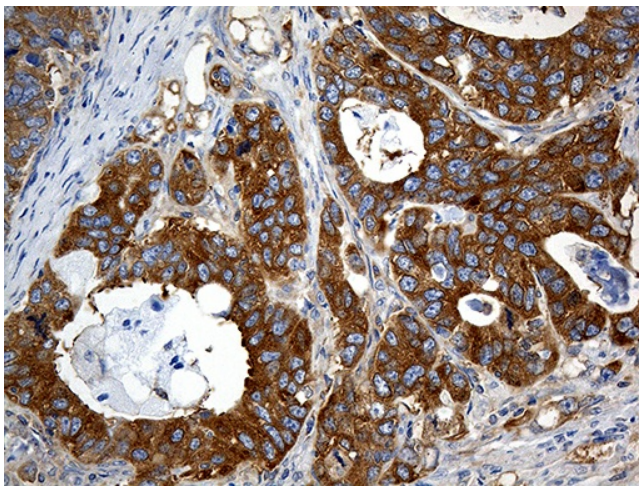
Immunohistochemical staining of paraffin-embedded Adenocarcinoma of Human colon tissue using anti-IL34 mouse monoclonal antibody. (Heat-induced epitope retrieval by 1mM EDTA in 10mM Tris buffer (pH8.5) at 120°C for 3min, [TA811737]) (1:1000)



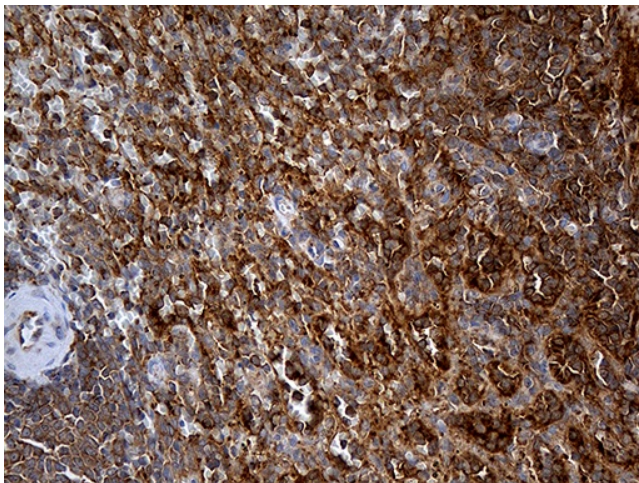
Immunohistochemical staining of paraffin-embedded Human tonsil within the normal limits using anti-IL34 mouse monoclonal antibody. (Heat-induced epitope retrieval by 1mM EDTA in 10mM Tris buffer (pH8.5) at 120°C for 3min, [TA811737]) (1:1000)



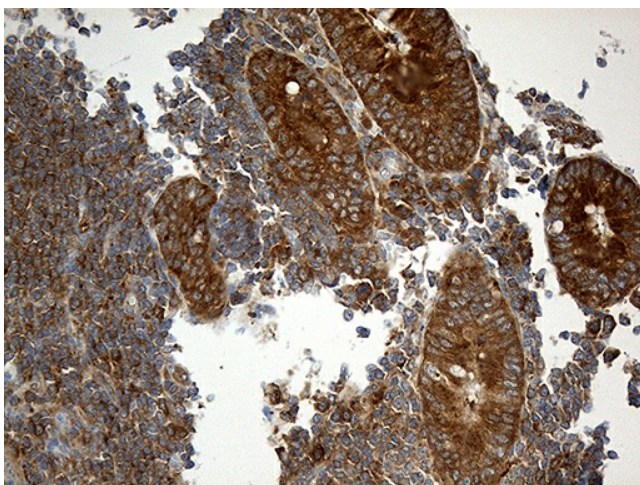
Immunohistochemical staining of paraffin-embedded Human gastric tissue within the normal limits using anti-IL34 mouse monoclonal antibody. (Heat-induced epitope retrieval by 1mM EDTA in 10mM Tris buffer (pH8.5) at 120°C for 3min, [TA811737]) (1:1000)



Immunohistochemical staining of paraffin-embedded Human Gastric Carcinoma using anti-IL34 mouse monoclonal antibody. (Heat-induced epitope retrieval by 1mM EDTA in 10mM Tris buffer (pH8.5) at 120°C for 3min, [TA811737]) (1:1000)



Immunohistochemical staining of paraffin-embedded Human spleen tissue within the normal limits using anti-IL34 mouse monoclonal antibody. (Heat-induced epitope retrieval by 1mM EDTA in 10mM Tris buffer (pH8.5) at 120°C for 3min, [TA811737]) (1:1000)



Immunohistochemical staining of paraffin-embedded Human appendix tissue within the normal limits using anti-IL34 mouse monoclonal antibody. (Heat-induced epitope retrieval by 1mM EDTA in 10mM Tris buffer (pH8.5) at 120°C for 3min, [TA811737]) (1:1000)