

## Product datasheet for **TA811726S**

### CD35 (CR1) Mouse Monoclonal Antibody [Clone ID: OTI2A8]

#### Product data:

|                       |  |
|-----------------------|--|
| Product Type:         | Primary Antibodies   |
| Clone Name:           | OTI2A8   |
| Applications:         | IHC, WB  |
| Recommended Dilution: | WB 1:2000, IHC 1:500   |
| Reactivity:           | Human  |
| Host:                 | Mouse  |
| Isotype:              | IgG2b  |
| Clonality:            | Monoclonal   |
| Immunogen:            | Human recombinant protein fragment corresponding to amino acids 1900-2039 of human CR1 (NP_000564) produced in E.coli. |
| Formulation:          | PBS (pH 7.3) containing 1% BSA, 50% glycerol and 0.02% sodium azide.   |
| Concentration:        | 1 mg/ml  |
| Purification:         | Purified from mouse ascites fluids or tissue culture supernatant by affinity chromatography (protein A/G)              |
| Conjugation:          | Unconjugated   |
| Storage:              | Store at -20°C as received.  |
| Stability:            | Stable for 12 months from date of receipt.   |
| Gene Name:            | complement component 3b/4b receptor 1 (Knops blood group)  |
| Database Link:        | <a href="#">NP_000564</a><br><a href="#">Entrez Gene 1378 Human</a><br><a href="#">P17927</a>                          |



[View online »](#)

**Background:**

This gene is a member of the receptors of complement activation (RCA) family and is located in the 'cluster RCA' region of chromosome 1. The gene encodes a monomeric single-pass type I membrane glycoprotein found on erythrocytes, leukocytes, glomerular podocytes, and splenic follicular dendritic cells. The Knops blood group system is a system of antigens located on this protein. The protein mediates cellular binding to particles and immune complexes that have activated complement. Decreases in expression of this protein and/or mutations in its gene have been associated with gallbladder carcinomas, mesangiocapillary glomerulonephritis, systemic lupus erythematosus and sarcoidosis. Mutations in this gene have also been associated with a reduction in Plasmodium falciparum rosetting, conferring protection against severe malaria. Alternate allele-specific splice variants, encoding different isoforms, have been characterized. Additional allele specific isoforms, including a secreted form, have been described but have not been fully characterized. [provided by RefSeq, Jul 2008]

**Synonyms:**

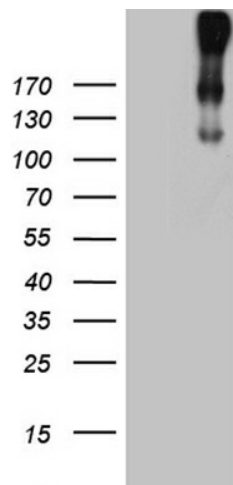
C3BR; C4BR; CD35; KN

**Protein Families:**

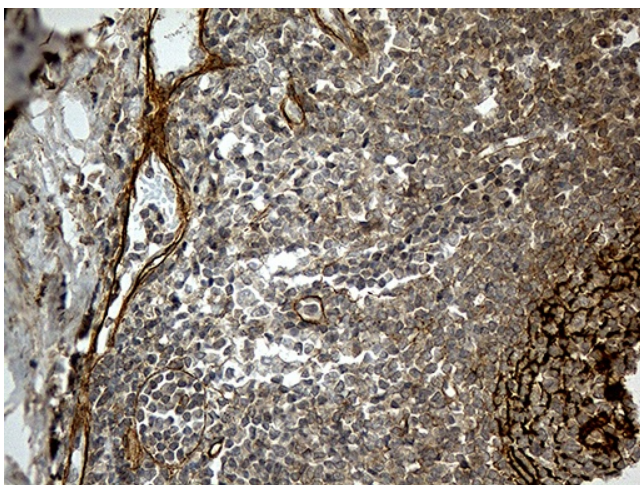
Druggable Genome, Transmembrane

**Protein Pathways:**

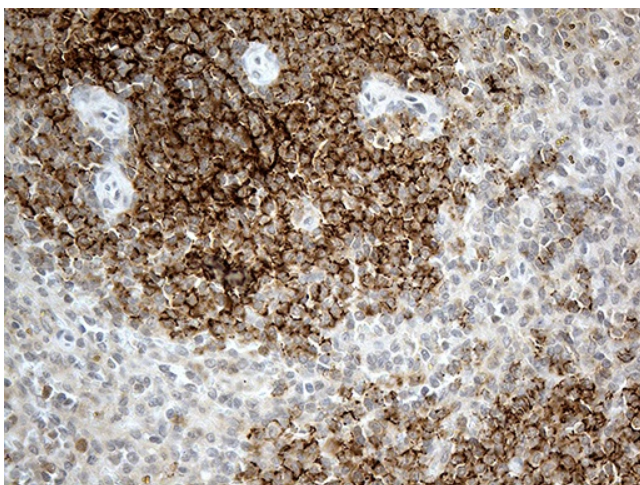
Complement and coagulation cascades, Hematopoietic cell lineage

**Product images:**

HEK293T cells were transfected with the pCMV6-ENTRY control (Cat# [PS100001], Left lane) or pCMV6-ENTRY CR1 (Cat# [RC216533], Right lane) cDNA for 48 hrs and lysed. Equivalent amounts of cell lysates (5 ug per lane) were separated by SDS-PAGE and immunoblotted with anti-CR1 (Cat# [TA811726])(1:2000).



Immunohistochemical staining of paraffin-embedded Human tonsil within the normal limits using anti-CR1 mouse monoclonal antibody. (Heat-induced epitope retrieval by 1mM EDTA in 10mM Tris buffer (pH8.5) at 120°C for 3min, [TA811726]) (1:500)



Immunohistochemical staining of paraffin-embedded Human spleen tissue within the normal limits using anti-CR1 mouse monoclonal antibody. (Heat-induced epitope retrieval by 1mM EDTA in 10mM Tris buffer (pH8.5) at 120°C for 3min, [TA811726]) (1:500)