

## Product datasheet for **TA811721**

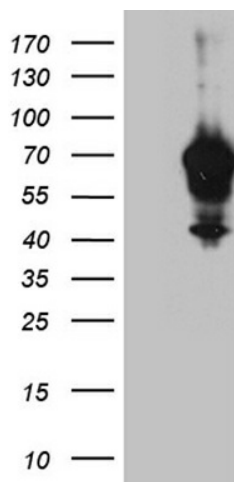
### IRF2BP1 Mouse Monoclonal Antibody [Clone ID: OTI5H7]

#### Product data:

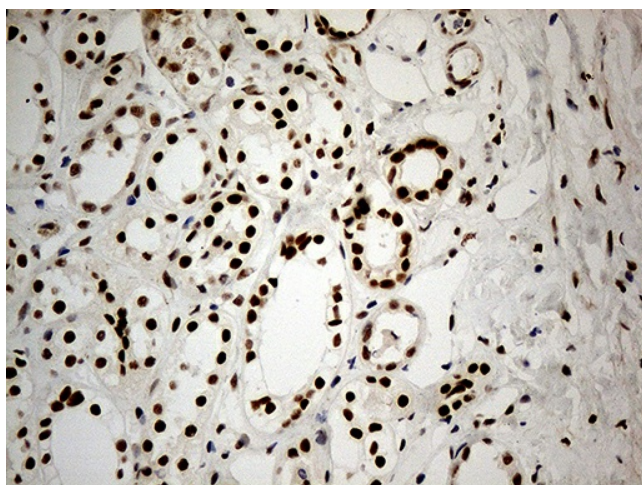
Product Type:	Primary Antibodies
Clone Name:	OTI5H7
Applications:	IHC, WB
Recommended Dilution:	WB 1:2000, IHC 1:1000
Reactivity:	Human, Mouse, Rat
Host:	Mouse
Isotype:	IgG1
Clonality:	Monoclonal
Immunogen:	Human recombinant protein fragment corresponding to amino acids 457-584 of human IRF2BP1 (NP_056464) produced in E.coli.
Formulation:	PBS (pH 7.3) containing 1% BSA, 50% glycerol and 0.02% sodium azide.
Concentration:	1 mg/ml
Purification:	Purified from mouse ascites fluids or tissue culture supernatant by affinity chromatography (protein A/G)
Conjugation:	Unconjugated
Storage:	Store at -20°C as received.
Stability:	Stable for 12 months from date of receipt.
Predicted Protein Size:	61.5 kDa
Gene Name:	interferon regulatory factor 2 binding protein 1
Database Link:	<a href="#">NP_056464</a> <a href="#">Entrez Gene 272359 Mouse</a> <a href="#">Entrez Gene 308404 Rat</a> <a href="#">Entrez Gene 26145 Human</a> <a href="#">Q8IU81</a>
Synonyms:	DKFZp434M154
Protein Families:	Druggable Genome



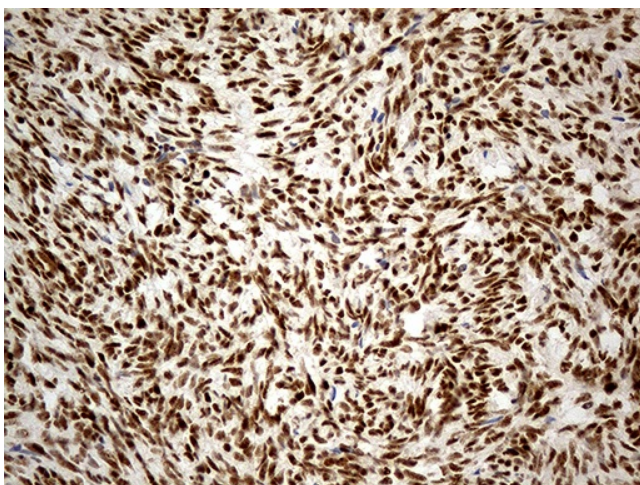
[View online »](#)

**Product images:**

HEK293T cells were transfected with the pCMV6-ENTRY control (Left lane) or pCMV6-ENTRY IRF2BP1 ([RC207151], Right lane) cDNA for 48 hrs and lysed. Equivalent amounts of cell lysates (5 ug per lane) were separated by SDS-PAGE and immunoblotted with anti-IRF2BP1 (1:2000). Positive lysates [LY414410] (100ug) and [LC414410] (20ug) can be purchased separately from OriGene.



Immunohistochemical staining of paraffin-embedded Human Kidney tissue within the normal limits using anti-IRF2BP1 mouse monoclonal antibody. Heat-induced epitope retrieval by EDTA solution buffer pH 8.0 at 120°C for 3 min.



Immunohistochemical staining of paraffin-embedded Human Ovary tissue within the normal limits using anti-IRF2BP1 mouse monoclonal antibody. Heat-induced epitope retrieval by EDTA solution buffer pH 8.0 at 120°C for 3 min.