

Product datasheet for **TA811716S**

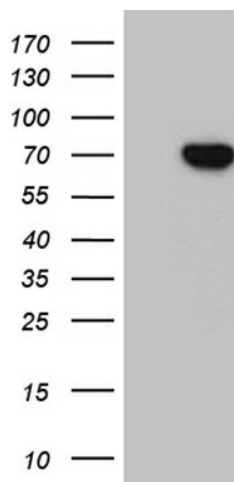
IRF2BP1 Mouse Monoclonal Antibody [Clone ID: OTI3A6]

Product data:

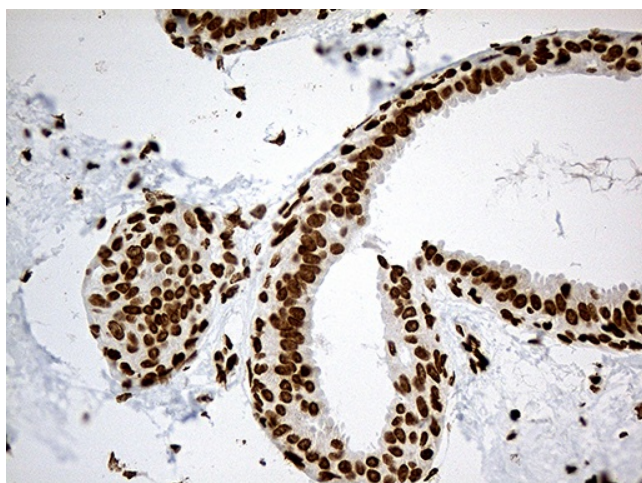
Product Type:	Primary Antibodies
Clone Name:	OTI3A6
Applications:	IHC, WB
Recommended Dilution:	WB 1:2000, IHC 1:500
Reactivity:	Human, Mouse, Rat
Host:	Mouse
Isotype:	IgG2b
Clonality:	Monoclonal
Immunogen:	Human recombinant protein fragment corresponding to amino acids 457-584 of human IRF2BP1 (NP_056464) produced in E.coli.
Formulation:	PBS (pH 7.3) containing 1% BSA, 50% glycerol and 0.02% sodium azide.
Concentration:	1 mg/ml
Purification:	Purified from mouse ascites fluids or tissue culture supernatant by affinity chromatography (protein A/G)
Conjugation:	Unconjugated
Storage:	Store at -20°C as received.
Stability:	Stable for 12 months from date of receipt.
Predicted Protein Size:	61.5 kDa
Gene Name:	interferon regulatory factor 2 binding protein 1
Database Link:	NP_056464 Entrez Gene 272359 Mouse Entrez Gene 308404 Rat Entrez Gene 26145 Human Q8IU81
Synonyms:	DKFZp434M154
Protein Families:	Druggable Genome



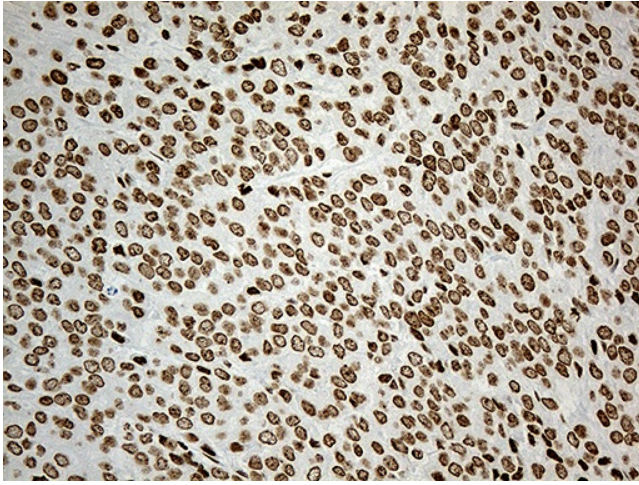
[View online »](#)

Product images:

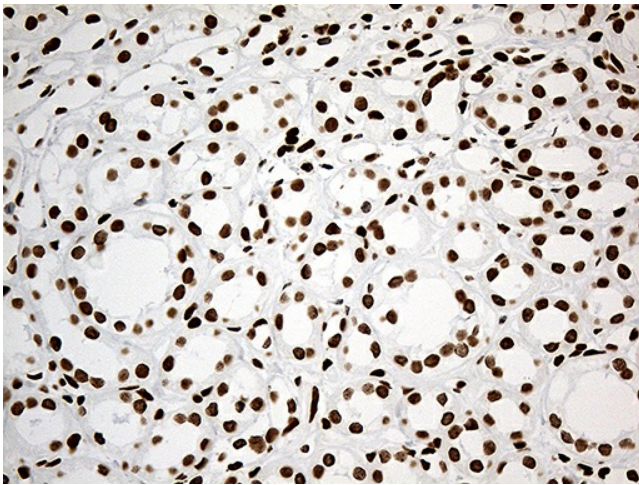
HEK293T cells were transfected with the pCMV6-ENTRY control (Cat# [PS100001], Left lane) or pCMV6-ENTRY IRF2BP1 (Cat# [RC207151], Right lane) cDNA for 48 hrs and lysed. Equivalent amounts of cell lysates (5 ug per lane) were separated by SDS-PAGE and immunoblotted with anti-IRF2BP1 (Cat# [TA811716])(1:2000). Positive lysates [LY414410] (100ug) and [LC414410] (20ug) can be purchased separately from OriGene.



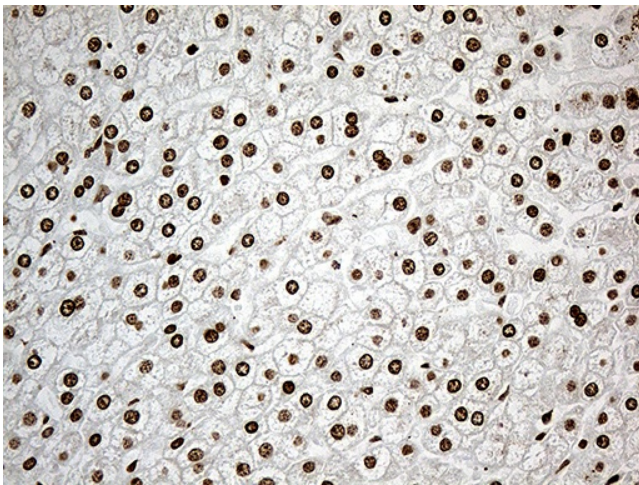
Immunohistochemical staining of paraffin-embedded Human breast tissue within the normal limits using anti-IRF2BP1 mouse monoclonal antibody. (Heat-induced epitope retrieval by 1mM EDTA in 10mM Tris buffer (pH8.5) at 120°C for 3min, [TA811716]) (1:500)



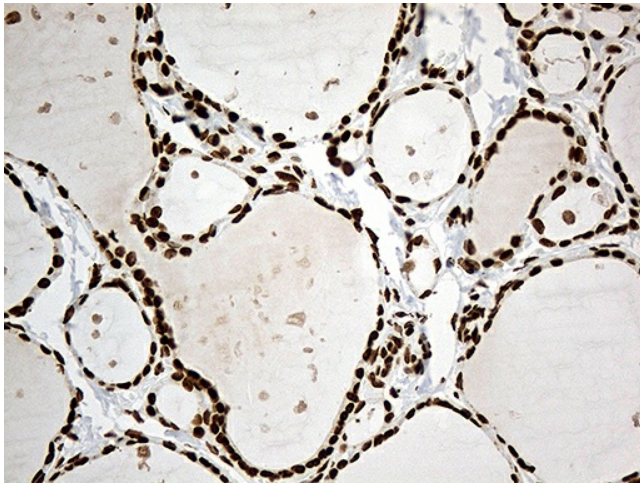
Immunohistochemical staining of paraffin-embedded Adenocarcinoma of Human breast tissue using anti-IRF2BP1 mouse monoclonal antibody. (Heat-induced epitope retrieval by 1mM EDTA in 10mM Tris buffer (pH8.5) at 120°C for 3min, [TA811716]) (1:500)



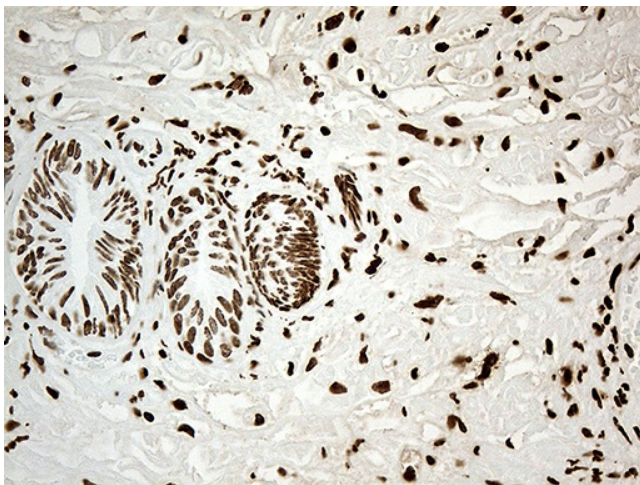
Immunohistochemical staining of paraffin-embedded Human Kidney tissue within the normal limits using anti-IRF2BP1 mouse monoclonal antibody. (Heat-induced epitope retrieval by 1mM EDTA in 10mM Tris buffer (pH8.5) at 120°C for 3min, [TA811716]) (1:500)



Immunohistochemical staining of paraffin-embedded Human liver tissue within the normal limits using anti-IRF2BP1 mouse monoclonal antibody. (Heat-induced epitope retrieval by 1mM EDTA in 10mM Tris buffer (pH8.5) at 120°C for 3min, [TA811716]) (1:500)



Immunohistochemical staining of paraffin-embedded Human thyroid tissue within the normal limits using anti-IRF2BP1 mouse monoclonal antibody. (Heat-induced epitope retrieval by 1mM EDTA in 10mM Tris buffer (pH8.5) at 120°C for 3min, [TA811716]) (1:500)



Immunohistochemical staining of paraffin-embedded Human prostate tissue within the normal limits using anti-IRF2BP1 mouse monoclonal antibody. (Heat-induced epitope retrieval by 1mM EDTA in 10mM Tris buffer (pH8.5) at 120°C for 3min, [TA811716]) (1:500)



Immunohistochemical staining of paraffin-embedded Carcinoma of Human prostate tissue using anti-IRF2BP1 mouse monoclonal antibody. (Heat-induced epitope retrieval by 1mM EDTA in 10mM Tris buffer (pH8.5) at 120°C for 3min, [TA811716]) (1:500)