

Product datasheet for **TA811706AM**

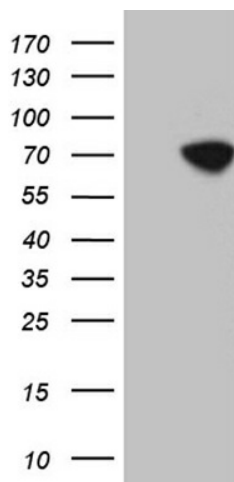
IRF2BP1 Mouse Monoclonal Antibody (Biotin conjugated) [Clone ID: OTI3F4]

Product data:

Product Type:	Primary Antibodies
Clone Name:	OTI3F4
Applications:	WB
Recommended Dilution:	WB 1:2000
Reactivity:	Human, Mouse, Rat
Host:	Mouse
Isotype:	IgG2b
Clonality:	Monoclonal
Immunogen:	Human recombinant protein fragment corresponding to amino acids 457-584 of human IRF2BP1 (NP_056464) produced in E.coli.
Formulation:	PBS (pH 7.3) containing 1% BSA, 50% glycerol and 0.02% sodium azide.
Concentration:	0.5 mg/ml
Purification:	Purified from mouse ascites fluids or tissue culture supernatant by affinity chromatography (protein A/G)
Conjugation:	Biotin
Storage:	Store at -20°C as received.
Stability:	Stable for 12 months from date of receipt.
Predicted Protein Size:	61.5 kDa
Gene Name:	interferon regulatory factor 2 binding protein 1
Database Link:	NP_056464 Entrez Gene 272359 Mouse Entrez Gene 308404 Rat Entrez Gene 26145 Human Q8IU81
Synonyms:	DKFZp434M154
Protein Families:	Druggable Genome



[View online »](#)

Product images:

HEK293T cells were transfected with the pCMV6-ENTRY control (Left lane) or pCMV6-ENTRY IRF2BP1 ([RC207151], Right lane) cDNA for 48 hrs and lysed. Equivalent amounts of cell lysates (5 ug per lane) were separated by SDS-PAGE and immunoblotted with anti-IRF2BP1 (1:2000). Positive lysates [LY414410] (100ug) and [LC414410] (20ug) can be purchased separately from OriGene.