

Product datasheet for **TA811701AM**

LSDP5 (PLIN5) Mouse Monoclonal Antibody (Biotin conjugated) [Clone ID: OTI3G4]

Product data:

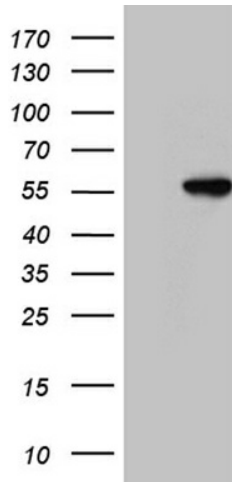
Product Type:	Primary Antibodies
Clone Name:	OTI3G4
Applications:	IHC, WB
Recommended Dilution:	WB 1:2000, IHC 1:500
Reactivity:	Human
Host:	Mouse
Isotype:	IgG2a
Clonality:	Monoclonal
Immunogen:	Human recombinant protein fragment corresponding to amino acids 1-463 of human PLIN5 (NP_001013728) produced in E.coli.
Formulation:	PBS (pH 7.3) containing 1% BSA, 50% glycerol and 0.02% sodium azide.
Concentration:	0.5 mg/ml
Purification:	Purified from mouse ascites fluids or tissue culture supernatant by affinity chromatography (protein A/G)
Conjugation:	Biotin
Storage:	Store at -20°C as received.
Stability:	Stable for 12 months from date of receipt.
Predicted Protein Size:	51.2 kDa
Gene Name:	perilipin 5
Database Link:	NP_001013728 Entrez Gene 440503 Human Q00G26



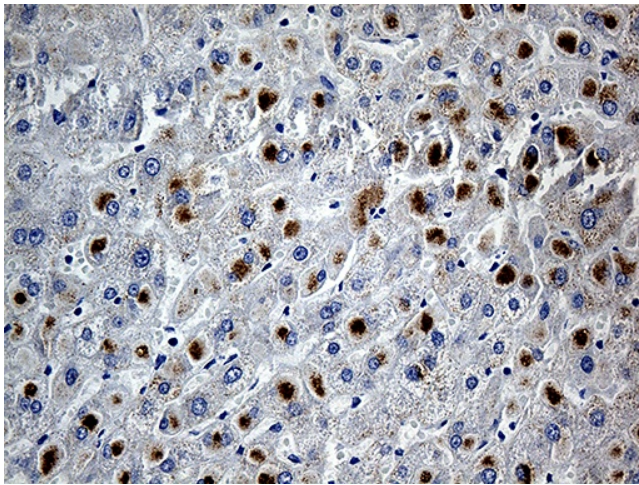
Background: Members of the perilipin family, such as PLIN5, coat intracellular lipid storage droplets and protect them from lipolytic degradation (Dalen et al., 2007 [PubMed 17234449]). [supplied by OMIM, Feb 2010]

Synonyms: LSDA5; LSDP5; MLDP; OXPAT

Product images:



HEK293T cells were transfected with the pCMV6-ENTRY control (Left lane) or pCMV6-ENTRY PLIN5 ([RC224783], Right lane) cDNA for 48 hrs and lysed. Equivalent amounts of cell lysates (5 ug per lane) were separated by SDS-PAGE and immunoblotted with anti-PLIN5. Positive lysates [LY423024] (100ug) and [LC423024] (20ug) can be purchased separately from OriGene.



Immunohistochemical staining of paraffin-embedded Human liver tissue within the normal limits using anti-PLIN5 mouse monoclonal antibody. Heat-induced epitope retrieval by EDTA solution buffer pH 8.0 at 120°C for 3 min.