

Product datasheet for **TA811698AM**

TBLR1 (TBL1XR1) Mouse Monoclonal Antibody (Biotin conjugated) [Clone ID: OTI2A8]

Product data:

Product Type:	Primary Antibodies
Clone Name:	OTI2A8
Applications:	WB
Recommended Dilution:	WB 1:500~2000
Reactivity:	Human, Rat, Mouse
Host:	Mouse
Isotype:	IgG1
Clonality:	Monoclonal
Immunogen:	Full length human recombinant protein of human TBL1XR1 (NP_078941) produced in E.coli.
Formulation:	PBS (pH 7.3) containing 1% BSA, 50% glycerol and 0.02% sodium azide.
Concentration:	0.5 mg/ml
Purification:	Purified from mouse ascites fluids or tissue culture supernatant by affinity chromatography (protein A/G)
Conjugation:	Biotin
Storage:	Store at -20°C as received.
Stability:	Stable for 12 months from date of receipt.
Predicted Protein Size:	55.4 kDa
Gene Name:	transducin (beta)-like 1 X-linked receptor 1
Database Link:	NP_078941 Entrez Gene 81004 Mouse Entrez Gene 365755 Rat Entrez Gene 79718 Human Q9BZK7



[View online »](#)

Background:

This gene is a member of the WD40 repeat-containing gene family and shares sequence similarity with transducin (beta)-like 1X-linked (TBL1X). The protein encoded by this gene is thought to be a component of both nuclear receptor corepressor (N-CoR) and histone deacetylase 3 (HDAC 3) complexes, and is required for transcriptional activation by a variety of transcription factors. Mutations in these gene have been associated with some autism spectrum disorders, and one finding suggests that haploinsufficiency of this gene may be a cause of intellectual disability with dysmorphism. Mutations in this gene as well as recurrent translocations involving this gene have also been observed in some tumors. [provided by RefSeq, Mar 2016]

Synonyms:

C21; DC42; IRA1; MRD41; TBLR1

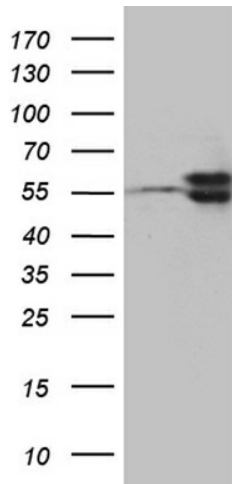
Protein Families:

Druggable Genome, Transcription Factors

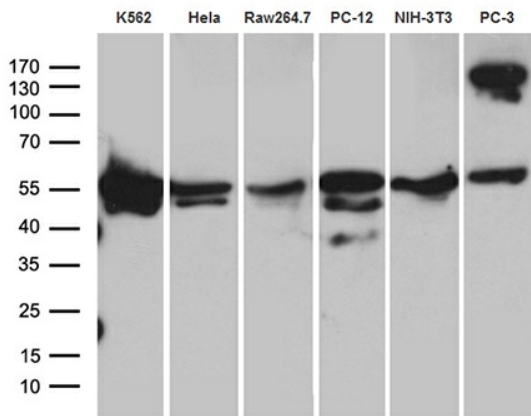
Protein Pathways:

Wnt signaling pathway

Product images:



HEK293T cells were transfected with the pCMV6-ENTRY control (Cat# [PS100001], Left lane) or pCMV6-ENTRY TBL1XR1 (Cat# [RC222452], Right lane) cDNA for 48 hrs and lysed. Equivalent amounts of cell lysates (5 ug per lane) were separated by SDS-PAGE and immunoblotted with anti-TBL1XR1 (Cat# [TA811698])(1:2000). Positive lysates [LY411181] (100ug) and [LC411181] (20ug) can be purchased separately from OriGene.



Western blot analysis of extracts (35ug) from 6 different cell lines by using anti-TBL1XR1 monoclonal antibody (1:500).