

## Product datasheet for **TA811688BM**

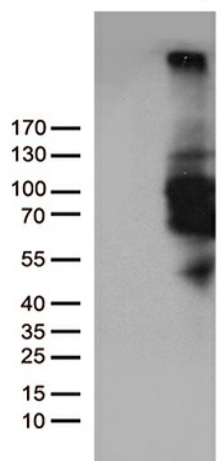
### **PDE3B Mouse Monoclonal Antibody (HRP conjugated) [Clone ID: OTI3F5]**

#### **Product data:**

|                         |   |
|-------------------------|---|
| Product Type:           | Primary Antibodies  |
| Clone Name:             | OTI3F5  |
| Applications:           | WB  |
| Recommended Dilution:   | WB 1:200  |
| Reactivity:             | Human   |
| Host:                   | Mouse   |
| Isotype:                | IgG2b   |
| Clonality:              | Monoclonal  |
| Immunogen:              | Human recombinant protein fragment corresponding to amino acids 654-1073 of human PDE3B (NP_000913) produced in E.coli. |
| Formulation:            | PBS (pH 7.3) containing 1% BSA, 50% glycerol.   |
| Concentration:          | 0.5 mg/ml   |
| Purification:           | Purified from mouse ascites fluids or tissue culture supernatant by affinity chromatography (protein A/G)               |
| Conjugation:            | HRP   |
| Storage:                | Store at -20°C as received.   |
| Stability:              | Stable for 12 months from date of receipt.  |
| Predicted Protein Size: | 124.2 kDa   |
| Gene Name:              | phosphodiesterase 3B  |
| Database Link:          | <a href="#">NP_000913</a><br><a href="#">Entrez Gene 5140 Human</a><br><a href="#">Q13370</a>                           |
| Synonyms:               | cGIPDE1; HcGIP1   |
| Protein Families:       | Druggable Genome, Transmembrane   |
| Protein Pathways:       | Insulin signaling pathway, Progesterone-mediated oocyte maturation, Purine metabolism                                   |



[View online »](#)

**Product images:**

HEK293T cells were transfected with the pCMV6-ENTRY control (Cat# [PS100001], Left lane) or pCMV6-ENTRY PDE3B (Cat# [RC219619], Right lane) cDNA for 48 hrs and lysed. Equivalent amounts of cell lysates (5 ug per lane) were separated by SDS-PAGE and immunoblotted with anti-PDE3B(Cat# [TA811688]). Positive lysates [LY424435] (100ug) and [LC424435] (20ug) can be purchased separately from OriGene.