

Product datasheet for **TA811688AM**

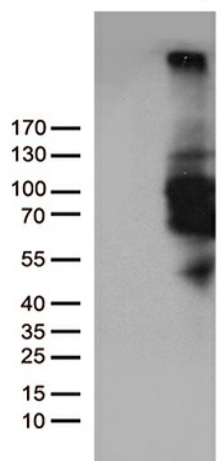
PDE3B Mouse Monoclonal Antibody (Biotin conjugated) [Clone ID: OTI3F5]

Product data:

Product Type:	Primary Antibodies
Clone Name:	OTI3F5
Applications:	WB
Recommended Dilution:	WB 1:200
Reactivity:	Human
Host:	Mouse
Isotype:	IgG2b
Clonality:	Monoclonal
Immunogen:	Human recombinant protein fragment corresponding to amino acids 654-1073 of human PDE3B (NP_000913) produced in E.coli.
Formulation:	PBS (pH 7.3) containing 1% BSA, 50% glycerol and 0.02% sodium azide.
Concentration:	0.5 mg/ml
Purification:	Purified from mouse ascites fluids or tissue culture supernatant by affinity chromatography (protein A/G)
Conjugation:	Biotin
Storage:	Store at -20°C as received.
Stability:	Stable for 12 months from date of receipt.
Predicted Protein Size:	124.2 kDa
Gene Name:	phosphodiesterase 3B
Database Link:	NP_000913 Entrez Gene 5140 Human Q13370
Synonyms:	cGIPDE1; HcGIP1
Protein Families:	Druggable Genome, Transmembrane
Protein Pathways:	Insulin signaling pathway, Progesterone-mediated oocyte maturation, Purine metabolism



[View online »](#)

Product images:

HEK293T cells were transfected with the pCMV6-ENTRY control (Cat# [PS100001], Left lane) or pCMV6-ENTRY PDE3B (Cat# [RC219619], Right lane) cDNA for 48 hrs and lysed. Equivalent amounts of cell lysates (5 ug per lane) were separated by SDS-PAGE and immunoblotted with anti-PDE3B (Cat# [TA811688]). Positive lysates [LY424435] (100ug) and [LC424435] (20ug) can be purchased separately from OriGene.