

## Product datasheet for **TA811680AM**

### **Pancreatic Lipase (PNLIP) Mouse Monoclonal Antibody (Biotin conjugated) [Clone ID: OTI9A9]**

#### **Product data:**

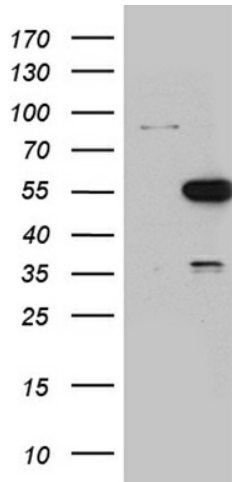
Product Type:	Primary Antibodies
Clone Name:	OTI9A9
Applications:	IHC, WB
Recommended Dilution:	WB 1:2000, IHC 1:1000
Reactivity:	Human
Host:	Mouse
Isotype:	IgG1
Clonality:	Monoclonal
Immunogen:	Human recombinant protein fragment corresponding to amino acids 355-465 of human PNLIP (NP_000927) produced in E.coli.
Formulation:	PBS (pH 7.3) containing 1% BSA, 50% glycerol and 0.02% sodium azide.
Concentration:	0.5 mg/ml
Purification:	Purified from mouse ascites fluids or tissue culture supernatant by affinity chromatography (protein A/G)
Conjugation:	Biotin
Storage:	Store at -20°C as received.
Stability:	Stable for 12 months from date of receipt.
Gene Name:	pancreatic lipase
Database Link:	<a href="#">NP_000927</a> <a href="#">Entrez Gene 5406 Human P16233</a>
Background:	This gene is a member of the lipase gene family. It encodes a carboxyl esterase that hydrolyzes insoluble, emulsified triglycerides, and is essential for the efficient digestion of dietary fats. This gene is expressed specifically in the pancreas. [provided by RefSeq, Jul 2008]
Synonyms:	PL; PNLIPD; PTL
Protein Families:	Druggable Genome, Secreted Protein



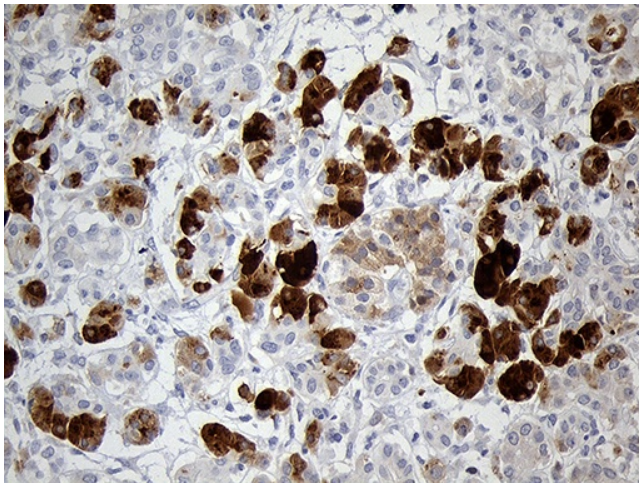
[View online »](#)

Protein Pathways: Glycerolipid metabolism, Metabolic pathways

### Product images:



HEK293T cells were transfected with the pCMV6-ENTRY control (Left lane) or pCMV6-ENTRY PNLIP ([RC204735], Right lane) cDNA for 48 hrs and lysed. Equivalent amounts of cell lysates (5 ug per lane) were separated by SDS-PAGE and immunoblotted with anti-PNLIP (1:2000). Positive lysates [LY424451] (100ug) and [LC424451] (20ug) can be purchased separately from OriGene.



Immunohistochemical staining of paraffin-embedded Human pancreas tissue within the normal limits using anti-PNLIP mouse monoclonal antibody. (Heat-induced epitope retrieval by 1mM EDTA in 10mM Tris buffer (pH8.5) at 120°C for 3min, [TA811680]) (1:1000)