

Product datasheet for **TA811665BM**

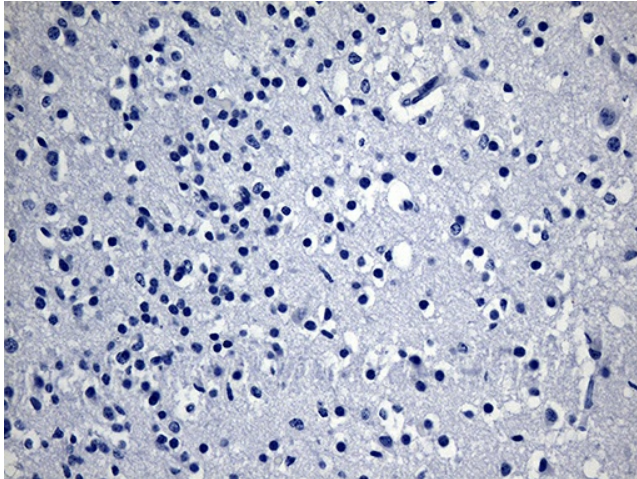
GPR17 Rat Monoclonal Antibody (HRP conjugated) [Clone ID: OTI6B9]

Product data:

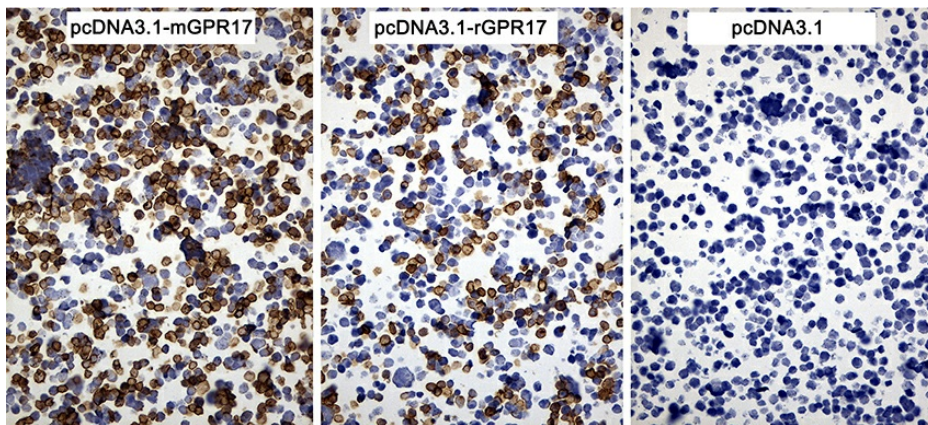
Product Type:	Primary Antibodies
Clone Name:	OTI6B9
Applications:	IHC
Recommended Dilution:	IHC 1:150
Reactivity:	Human, Mouse, Rat
Host:	Rat
Clonality:	Monoclonal
Immunogen:	Synthetic peptide (the amino acid sequence is considered to be commercially sensitive) within Human GPR17 N-terminal. The exact sequence is proprietary.
Formulation:	PBS (pH 7.3) containing 1% BSA, 50% glycerol.
Concentration:	0.5 mg/ml
Purification:	Purified from tissue culture supernatant by affinity chromatography (protein A/G)
Conjugation:	HRP
Storage:	Store at -20°C as received.
Stability:	Stable for 12 months from date of receipt.
Gene Name:	G protein-coupled receptor 17
Database Link:	NP_005282 Entrez Gene 574402 Mouse Entrez Gene 767613 Rat Entrez Gene 2840 Human Q13304
Synonyms:	DKFZp686M18273
Protein Families:	Druggable Genome, GPCR, Transmembrane



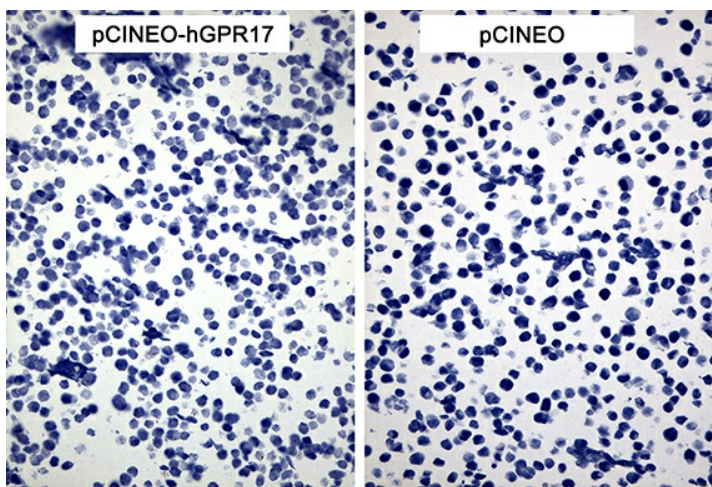
[View online »](#)

Product images:

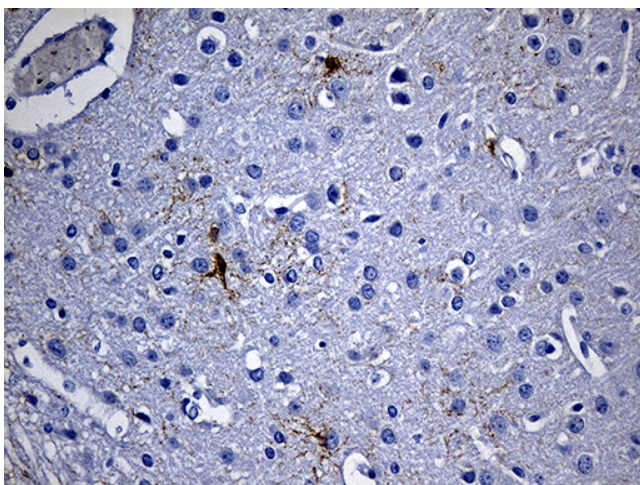
Immunohistochemical staining of paraffin-embedded Human adult brain tissue within the normal limits using anti-GPR17 mouse monoclonal antibody. This figure shows negative staining. (Heat-induced epitope retrieval by 1mM EDTA in 10mM Tris buffer (pH8.5) at 120°C for 3min, [TA811665]) (1:150)



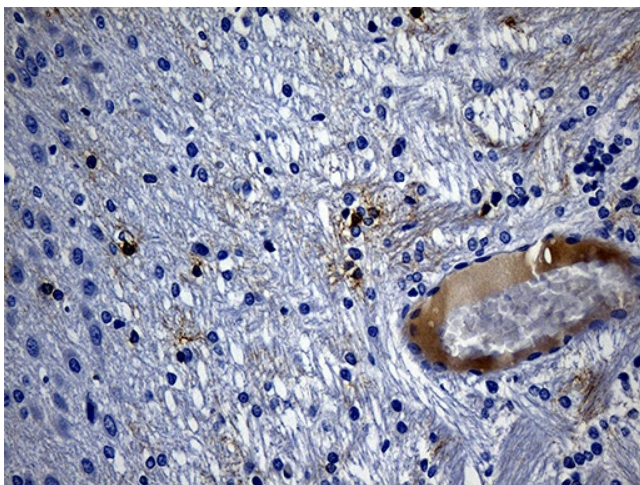
Immunohistochemical staining of paraffin-embedded cell pellets of 293T cells transfected with pcDNA3.1-mGPR17, pcDNA3.1-rGPR17 or pcDNA3.1 plasmids using anti-GPR17 Mouse monoclonal antibody (Heat-induced epitope retrieval by Tris-EDTA buffer (pH8.0) at 120°C for 2.5 min) (1:150).



Immunohistochemical staining of paraffin-embedded cell pellets of 293T cells transfected with pCINEO-hGPR17 or pCINEO plasmids using anti-GPR17 Mouse monoclonal antibody. This figure shows negative staining. (Heat-induced epitope retrieval by Tris-EDTA buffer (pH8.0) at 120°C for 2.5 min) (1:150).



Immunohistochemical staining of paraffin-embedded mouse cerebrum tissue within the normal limits using anti-GPR17 mouse monoclonal antibody. (Heat-induced epitope retrieval by 1mM EDTA in 10mM Tris buffer (pH8.5) at 120°C for 3min, [TA811665]) (1:150)



Immunohistochemical staining of paraffin-embedded rat cerebrum tissue within the normal limits using anti-GPR17 mouse monoclonal antibody. (Heat-induced epitope retrieval by 1mM EDTA in 10mM Tris buffer (pH8.5) at 120°C for 3min, [TA811665]) (1:150)