

## Product datasheet for **TA811658**

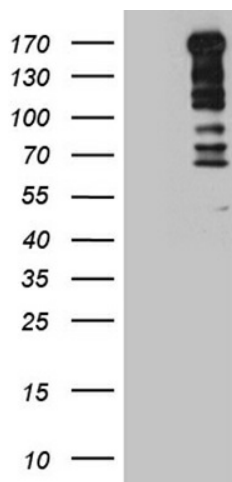
### TOPBP1 Mouse Monoclonal Antibody [Clone ID: OTI5C12]

#### Product data:

Product Type:	Primary Antibodies
Clone Name:	OTI5C12
Applications:	WB
Recommended Dilution:	WB 1:2000
Reactivity:	Human
Host:	Mouse
Isotype:	IgG2a
Clonality:	Monoclonal
Immunogen:	Human recombinant protein fragment corresponding to amino acids 892-1146 of human TOPBP1 (NP_008958) produced in E.coli.
Formulation:	PBS (pH 7.3) containing 1% BSA, 50% glycerol and 0.02% sodium azide.
Concentration:	1 mg/ml
Purification:	Purified from mouse ascites fluids or tissue culture supernatant by affinity chromatography (protein A/G)
Conjugation:	Unconjugated
Storage:	Store at -20°C as received.
Stability:	Stable for 12 months from date of receipt.
Predicted Protein Size:	171.1 kDa
Gene Name:	topoisomerase (DNA) II binding protein 1
Database Link:	<a href="#">NP_008958</a> <a href="#">Entrez Gene 11073 Human</a> <a href="#">Q92547</a>
Background:	This gene encodes a binding protein which interacts with the C-terminal region of topoisomerase II beta. This interaction suggests a supportive role for this protein in the catalytic reactions of topoisomerase II beta through transient breakages of DNA strands. [provided by RefSeq, Jul 2008]
Synonyms:	TOP2BP1



[View online »](#)

**Product images:**

HEK293T cells were transfected with the pCMV6-ENTRY control (Cat# [PS100001], Left lane) or pCMV6-ENTRY TOPBP1 (Cat# [RC218584], Right lane) cDNA for 48 hrs and lysed. Equivalent amounts of cell lysates (5 ug per lane) were separated by SDS-PAGE and immunoblotted with anti-TOPBP(Cat# TA811658). Positive lysates [LY416246] (100ug) and [LC416246] (20ug) can be purchased separately from OriGene.