

## Product datasheet for **TA811651**

### **RACGAP1 Mouse Monoclonal Antibody [Clone ID: OTI3D8]**

#### **Product data:**

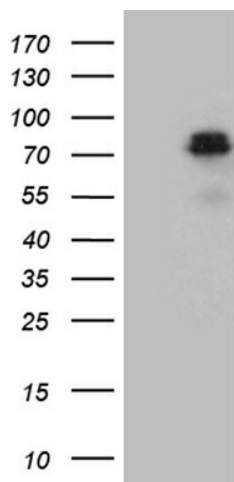
Product Type:	Primary Antibodies
Clone Name:	OTI3D8
Applications:	IHC, WB
Recommended Dilution:	WB 1:2000, IHC 1:500
Reactivity:	Human, Mouse, Rat
Host:	Mouse
Isotype:	IgG1
Clonality:	Monoclonal
Immunogen:	Human recombinant protein fragment corresponding to amino acids 123-238 of human RACGAP1 (NP_001119575) produced in E.coli.
Formulation:	PBS (pH 7.3) containing 1% BSA, 50% glycerol and 0.02% sodium azide.
Concentration:	1 mg/ml
Purification:	Purified from mouse ascites fluids or tissue culture supernatant by affinity chromatography (protein A/G)
Conjugation:	Unconjugated
Storage:	Store at -20°C as received.
Stability:	Stable for 12 months from date of receipt.
Gene Name:	Rac GTPase activating protein 1
Database Link:	<a href="#">NP_001119575</a> <a href="#">Entrez Gene 26934 Mouse</a> <a href="#">Entrez Gene 315298 Rat</a> <a href="#">Entrez Gene 29127 Human</a> <a href="#">Q9H0H5</a>
Background:	This gene encodes a GTPase-activating protein (GAP) that is a component of the centralspindlin complex. This protein binds activated forms of Rho GTPases and stimulates GTP hydrolysis, which results in negative regulation of Rho-mediated signals. This protein plays a regulatory role in cytokinesis, cell growth, and differentiation. Alternatively spliced transcript variants have been found for this gene. There is a pseudogene for this gene on chromosome 12. [provided by RefSeq, Feb 2016]
Synonyms:	CYK4; HsCYK-4; ID-GAP; MgcRacGAP



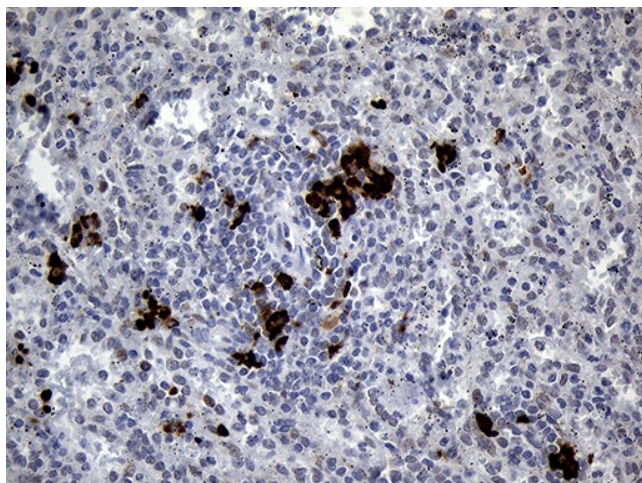
[View online »](#)

Protein Families: Druggable Genome

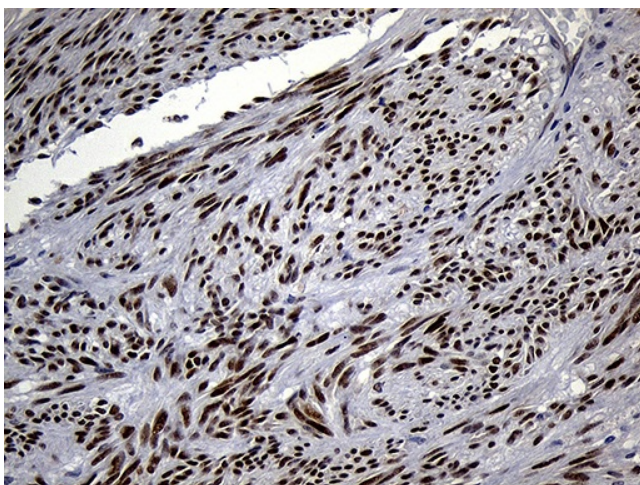
### Product images:



HEK293T cells were transfected with the pCMV6-ENTRY control (Left lane) or pCMV6-ENTRY RACGAP1 ([RC226045], Right lane) cDNA for 48 hrs and lysed. Equivalent amounts of cell lysates (5 ug per lane) were separated by SDS-PAGE and immunoblotted with anti-RACGAP1 (1:2000). Positive lysates [LY426645] (100ug) and [LC426645] (20ug) can be purchased separately from OriGene.



Immunohistochemical staining of paraffin-embedded Human spleen tissue within the normal limits using anti-RACGAP1 mouse monoclonal antibody. (Heat-induced epitope retrieval by 1mM EDTA in 10mM Tris buffer (pH8.5) at 120°C for 3min, TA811651) (1:500)



Immunohistochemical staining of paraffin-embedded Human gastric stromal tumor tissue using anti-RACGAP1 mouse monoclonal antibody. (Heat-induced epitope retrieval by 1mM EDTA in 10mM Tris buffer (pH8.5) at 120°C for 3min, TA811651) (1:500)