

Product datasheet for **TA811646BM**

IL20 Receptor alpha (IL20RA) Mouse Monoclonal Antibody (HRP conjugated) [Clone ID: OTI11H4]

Product data:

Product Type:	Primary Antibodies
Clone Name:	OTI11H4
Applications:	WB
Recommended Dilution:	WB 1:500
Reactivity:	Human
Host:	Mouse
Isotype:	IgG1
Clonality:	Monoclonal
Immunogen:	Human recombinant protein fragment corresponding to amino acids 272-553 of human IL20RA (NP_055247) produced in E.coli.
Formulation:	PBS (pH 7.3) containing 1% BSA, 50% glycerol.
Concentration:	0.5 mg/ml
Purification:	Purified from mouse ascites fluids or tissue culture supernatant by affinity chromatography (protein A/G)
Conjugation:	HRP
Storage:	Store at -20°C as received.
Stability:	Stable for 12 months from date of receipt.
Gene Name:	interleukin 20 receptor subunit alpha
Database Link:	NP_055247 Entrez Gene 53832 Human Q9UHF4
Background:	This gene encodes a member of the type II cytokine receptor family. The encoded protein is a subunit of the receptor for interleukin 20, a cytokine that may be involved in epidermal function. The interleukin 20 receptor is a heterodimeric complex consisting of the encoded protein and interleukin 20 receptor beta. This gene and interleukin 20 receptor beta are highly expressed in skin, and are upregulated in psoriasis. Alternative splicing results in multiple transcript variants. [provided by RefSeq, Jul 2013]



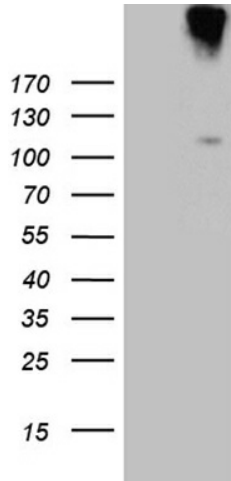
[View online »](#)

Synonyms: CRF2-8; IL-20R-alpha; IL-20R1; IL-20RA

Protein Families: Druggable Genome, Transmembrane

Protein Pathways: Cytokine-cytokine receptor interaction, Jak-STAT signaling pathway

Product images:



HEK293T cells were transfected with the pCMV6-ENTRY control (Left lane) or pCMV6-ENTRY IL20RA ([RC212546], Right lane) cDNA for 48 hrs and lysed. Equivalent amounts of cell lysates (5 ug per lane) were separated by SDS-PAGE and immunoblotted with anti-IL20RA (1:500). Positive lysates [LY415281] (100ug) and [LC415281] (20ug) can be purchased separately from OriGene.