

Product datasheet for TA811643

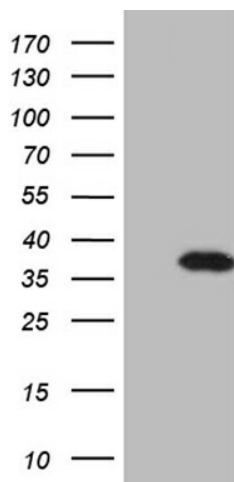
DLX1 Mouse Monoclonal Antibody [Clone ID: OTI1A2]

Product data:

Product Type:	Primary Antibodies
Clone Name:	OTI1A2
Applications:	WB
Recommend Dilution:	WB 1:2000
Reactivity:	Human
Host:	Mouse
Isotype:	IgG1
Clonality:	Monoclonal
Immunogen:	Human recombinant protein fragment corresponding to amino acids 1-255 of human DLX1 (NP_835221) produced in E.coli.
Formulation:	PBS (PH 7.3) containing 1% BSA, 50% glycerol and 0.02% sodium azide.
Concentration:	1 mg/ml
Purification:	Purified from cell culture supernatant by affinity chromatography
Gene Name:	distal-less homeobox 1
Database Link:	NP_835221 Entrez Gene 1745 Human
Background:	This gene encodes a member of a homeobox transcription factor gene family similar to the Drosophila distal-less gene. The encoded protein is localized to the nucleus where it may function as a transcriptional regulator of signals from multiple TGF- β superfamily members. The encoded protein may play a role in the control of craniofacial patterning and the differentiation and survival of inhibitory neurons in the forebrain. This gene is located in a tail-to-tail configuration with another member of the family on the long arm of chromosome 2. Alternatively spliced transcript variants encoding different isoforms have been described. [provided by RefSeq, Jul 2008]
Synonyms:	distal-less homeo box 1; distal-less homeobox 1; OTTHUMP00000082494; OTTHUMP00000082497
Protein Families:	ES Cell Differentiation/IPS, Transcription Factors



[View online »](#)

Product images:

HEK293T cells were transfected with the pCMV6-ENTRY control (Left lane) or pCMV6-ENTRY DLX1 (RC206895, Right lane) cDNA for 48 hrs and lysed. Equivalent amounts of cell lysates (5 ug per lane) were separated by SDS-PAGE and immunoblotted with anti-DLX1 (1:2000). Positive lysates LY406033 (100ug) and LC406033 (20ug) can be purchased separately from OriGene.