

## Product datasheet for **TA811642M**

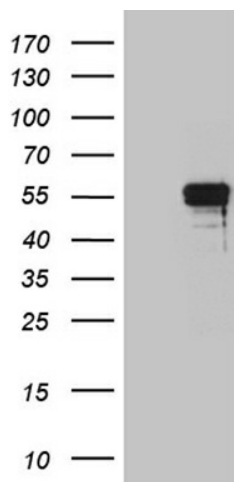
### **LSDP5 (PLIN5) Mouse Monoclonal Antibody [Clone ID: OTI4C8]**

#### **Product data:**

Product Type:	Primary Antibodies
Clone Name:	OTI4C8
Applications:	WB
Recommended Dilution:	WB 1:2000
Reactivity:	Human
Host:	Mouse
Isotype:	IgG2a
Clonality:	Monoclonal
Immunogen:	Human recombinant protein fragment corresponding to amino acids 1-463 of human PLIN5 (NP_001013728) produced in E.coli.
Formulation:	PBS (pH 7.3) containing 1% BSA, 50% glycerol and 0.02% sodium azide.
Concentration:	1 mg/ml
Purification:	Purified from mouse ascites fluids or tissue culture supernatant by affinity chromatography (protein A/G)
Conjugation:	Unconjugated
Storage:	Store at -20°C as received.
Stability:	Stable for 12 months from date of receipt.
Predicted Protein Size:	51.2 kDa
Gene Name:	perilipin 5
Database Link:	<a href="#">NP_001013728</a> <a href="#">Entrez Gene 440503 Human</a> <a href="#">Q00G26</a>
Background:	Members of the perilipin family, such as PLIN5, coat intracellular lipid storage droplets and protect them from lipolytic degradation (Dalen et al., 2007 [PubMed 17234449]). [supplied by OMIM, Feb 2010]
Synonyms:	LSDA5; LSDP5; MLDP; OXPAT



[View online »](#)

**Product images:**


HEK293T cells were transfected with the pCMV6-ENTRY control (Left lane) or pCMV6-ENTRY PLIN5 ([RC224783], Right lane) cDNA for 48 hrs and lysed. Equivalent amounts of cell lysates (5 ug per lane) were separated by SDS-PAGE and immunoblotted with anti-PLIN5 (1:2000). Positive lysates [LY423024] (100ug) and [LC423024] (20ug) can be purchased separately from OriGene.