

Product datasheet for **TA811638AM**

TM4SF2 (TSPAN7) Mouse Monoclonal Antibody (Biotin conjugated) [Clone ID: OTI2D6]

Product data:

Product Type:	Primary Antibodies
Clone Name:	OTI2D6
Applications:	IHC, WB
Recommended Dilution:	WB 1:500, IHC 1:500
Reactivity:	Human, Mouse, Rat
Host:	Mouse
Isotype:	IgG1
Clonality:	Monoclonal
Immunogen:	Full length human recombinant protein of human TSPAN7 (NP_004606) produced in HEK293T cell.
Formulation:	PBS (pH 7.3) containing 1% BSA, 50% glycerol and 0.02% sodium azide.
Concentration:	0.5 mg/ml
Purification:	Purified from mouse ascites fluids or tissue culture supernatant by affinity chromatography (protein A/G)
Conjugation:	Biotin
Storage:	Store at -20°C as received.
Stability:	Stable for 12 months from date of receipt.
Gene Name:	tetraspanin 7
Database Link:	NP_004606 Entrez Gene 7102 Human P41732



[View online »](#)

Background:

The protein encoded by this gene is a member of the transmembrane 4 superfamily, also known as the tetraspanin family. Most of these members are cell-surface proteins that are characterized by the presence of four hydrophobic domains. The proteins mediate signal transduction events that play a role in the regulation of cell development, activation, growth and motility. This encoded protein is a cell surface glycoprotein and may have a role in the control of neurite outgrowth. It is known to complex with integrins. This gene is associated with X-linked mental retardation and neuropsychiatric diseases such as Huntington's chorea, fragile X syndrome and myotonic dystrophy. [provided by RefSeq, Jul 2008]

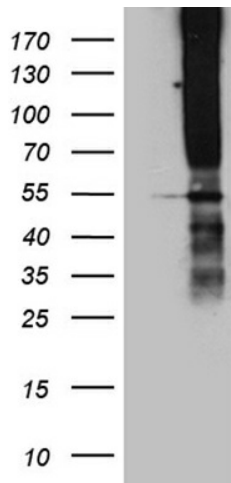
Synonyms:

A15; CCG-B7; CD231; DXS1692E; MRX58; MXS1; TALLA-1; TM4SF2; TM4SF2b

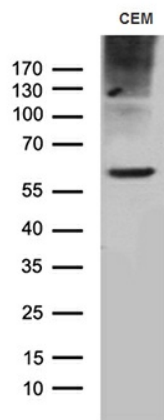
Protein Families:

Druggable Genome, Transmembrane

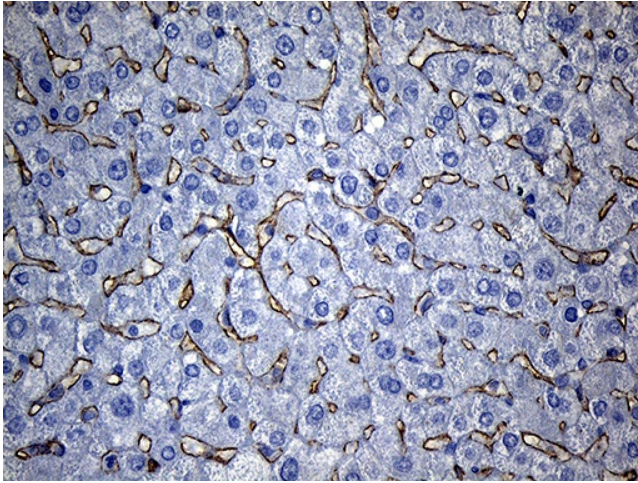
Product images:



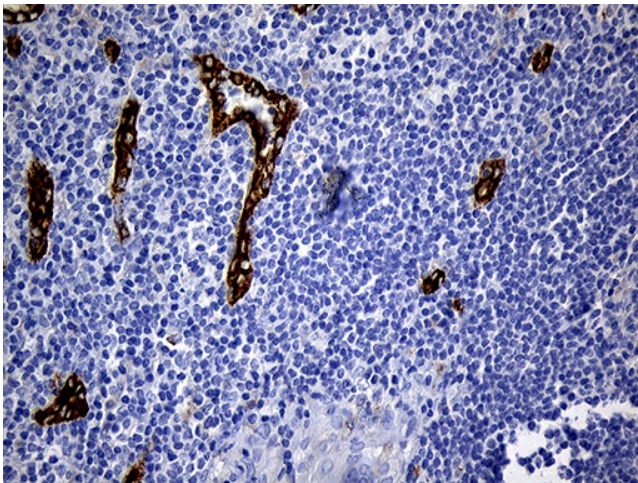
HEK293T cells were transfected with the pCMV6-ENTRY control (Cat# [PS100001], Left lane) or pCMV6-ENTRY TSPAN7 (Cat# [RC205248], Right lane) cDNA for 48 hrs and lysed. Equivalent amounts of cell lysates (5 ug per lane) were separated by SDS-PAGE and immunoblotted with anti-TSPAN7 (Cat# [TA811638])(1:500). Positive lysates [LY401460] (100ug) and [LC401460] (20ug) can be purchased separately from OriGene.



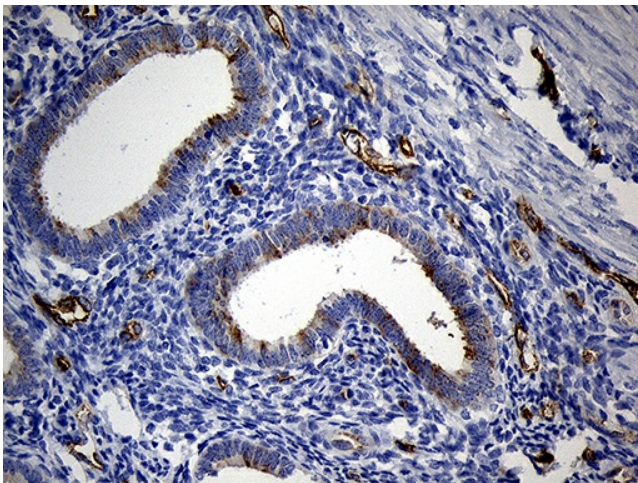
Western blot analysis of extracts (35ug) from CCRF-CEM cell line by using anti-TSPAN7 monoclonal antibody (1:500).



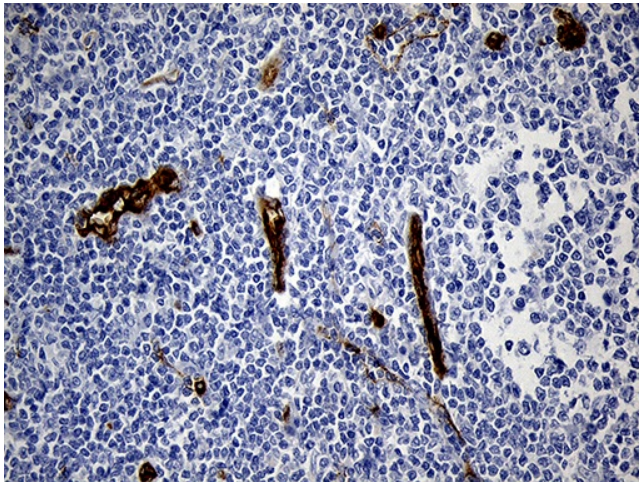
Immunohistochemical staining of paraffin-embedded Human liver tissue within the normal limits using anti-TSPAN7 mouse monoclonal antibody. (Heat-induced epitope retrieval by 1mM EDTA in 10mM Tris buffer (pH8.5) at 120°C for 3min, [TA811638]) (1:500)



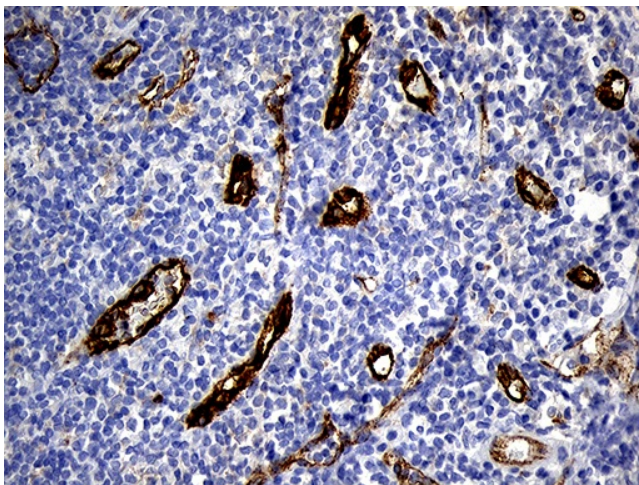
Immunohistochemical staining of paraffin-embedded Carcinoma of Human thyroid tissue using anti-TSPAN7 mouse monoclonal antibody. (Heat-induced epitope retrieval by 1mM EDTA in 10mM Tris buffer (pH8.5) at 120°C for 3min, [TA811638]) (1:500)



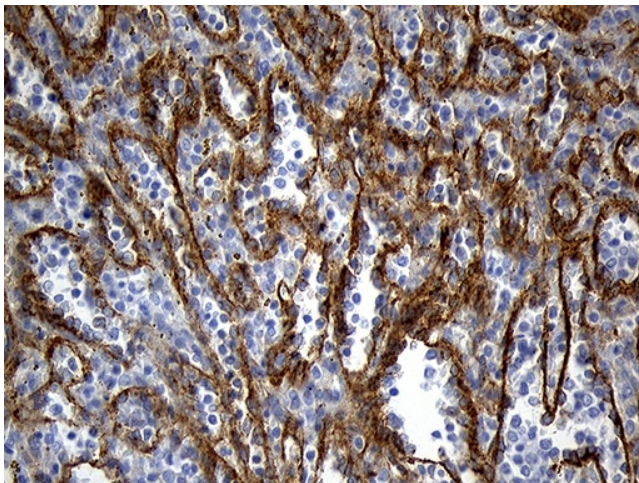
Immunohistochemical staining of paraffin-embedded Human endometrium tissue within the normal limits using anti-TSPAN7 mouse monoclonal antibody. (Heat-induced epitope retrieval by 1mM EDTA in 10mM Tris buffer (pH8.5) at 120°C for 3min, [TA811638]) (1:500)



Immunohistochemical staining of paraffin-embedded Human lymphoma tissue using anti-TSPAN7 mouse monoclonal antibody. (Heat-induced epitope retrieval by 1mM EDTA in 10mM Tris buffer (pH8.5) at 120°C for 3min, [TA811638]) (1:500)



Immunohistochemical staining of paraffin-embedded Human tonsil within the normal limits using anti-TSPAN7 mouse monoclonal antibody. (Heat-induced epitope retrieval by 1mM EDTA in 10mM Tris buffer (pH8.5) at 120°C for 3min, [TA811638]) (1:500)



Immunohistochemical staining of paraffin-embedded Human spleen tissue within the normal limits using anti-TSPAN7 mouse monoclonal antibody. (Heat-induced epitope retrieval by 1mM EDTA in 10mM Tris buffer (pH8.5) at 120°C for 3min, [TA811638]) (1:500)