

Product datasheet for **TA811631S**

DLX1 Mouse Monoclonal Antibody [Clone ID: OT11E6]

Product data:

Product Type:	Primary Antibodies
Clone Name:	OT11E6
Applications:	IHC, WB
Recommended Dilution:	WB 1:2000, IHC 1:500
Reactivity:	Human, Mouse, Rat
Host:	Mouse
Isotype:	IgG2b
Clonality:	Monoclonal
Immunogen:	Human recombinant protein fragment corresponding to amino acids 1-255 of human DLX1 (NP_835221) produced in E.coli.
Formulation:	PBS (pH 7.3) containing 1% BSA, 50% glycerol and 0.02% sodium azide.
Concentration:	1 mg/ml
Purification:	Purified from mouse ascites fluids or tissue culture supernatant by affinity chromatography (protein A/G)
Conjugation:	Unconjugated
Storage:	Store at -20°C as received.
Stability:	Stable for 12 months from date of receipt.
Gene Name:	distal-less homeobox 1
Database Link:	NP_835221 Entrez Gene 13390 Mouse Entrez Gene 296500 Rat Entrez Gene 1745 Human P56177



[View online »](#)

Background:

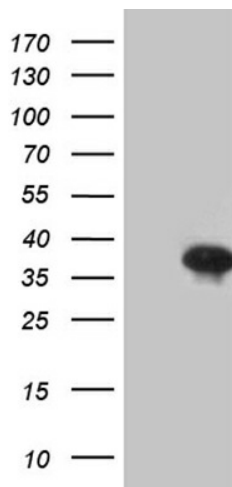
This gene encodes a member of a homeobox transcription factor gene family similar to the *Drosophila* distal-less gene. The encoded protein is localized to the nucleus where it may function as a transcriptional regulator of signals from multiple TGF- β superfamily members. The encoded protein may play a role in the control of craniofacial patterning and the differentiation and survival of inhibitory neurons in the forebrain. This gene is located in a tail-to-tail configuration with another member of the family on the long arm of chromosome 2. Alternatively spliced transcript variants encoding different isoforms have been described. [provided by RefSeq, Jul 2008]

Synonyms:

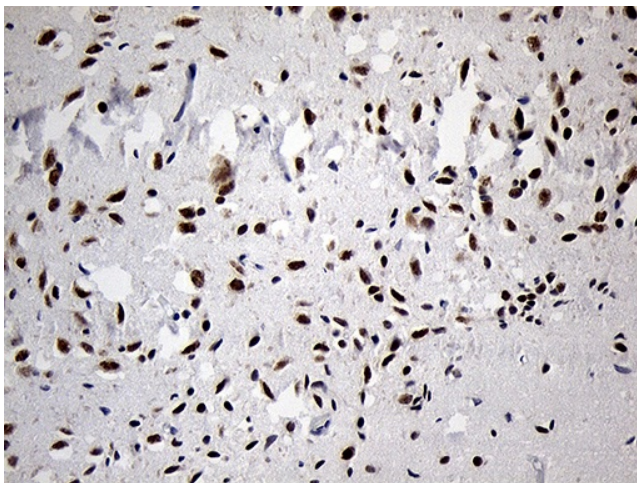
distal-less homeo box 1; distal-less homeobox 1; OTTHUMP00000082494; OTTHUMP00000082497

Protein Families:

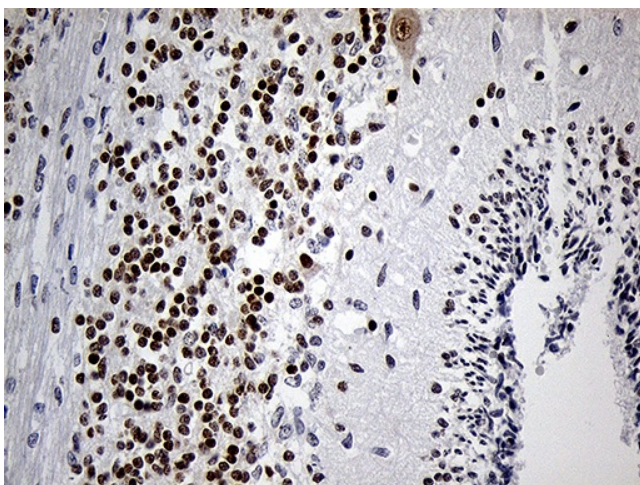
ES Cell Differentiation/IPS, Transcription Factors

Product images:


HEK293T cells were transfected with the pCMV6-ENTRY control (Cat# [PS100001], Left lane) or pCMV6-ENTRY DLX1 (Cat# [RC206895], Right lane) cDNA for 48 hrs and lysed. Equivalent amounts of cell lysates (5 ug per lane) were separated by SDS-PAGE and immunoblotted with anti-DLX1 (Cat# [TA811631])(1:2000). Positive lysates [LY406033] (100ug) and [LC406033] (20ug) can be purchased separately from OriGene.



Immunohistochemical staining of paraffin-embedded Human adult brain tissue within the normal limits using anti-DLX1 mouse monoclonal antibody. (Heat-induced epitope retrieval by 1mM EDTA in 10mM Tris buffer (pH8.5) at 120°C for 3min, [TA811631]) (1:500)



Immunohistochemical staining of paraffin-embedded Human embryonic cerebellum within the normal limits using anti-DLX1 mouse monoclonal antibody. (Heat-induced epitope retrieval by 1mM EDTA in 10mM Tris buffer (pH8.5) at 120°C for 3min, [TA811631]) (1:500)