

## Product datasheet for **TA811629AM**

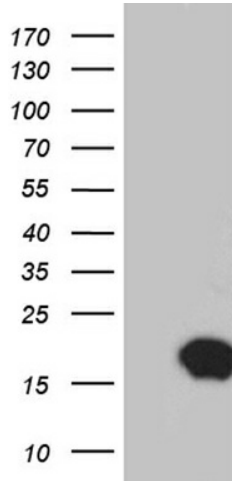
### IFITM2 Mouse Monoclonal Antibody (Biotin conjugated) [Clone ID: OTI6F7]

#### Product data:

Product Type:	Primary Antibodies
Clone Name:	OTI6F7
Applications:	WB
Recommended Dilution:	WB 1:2000
Reactivity:	Human
Host:	Mouse
Isotype:	IgG1
Clonality:	Monoclonal
Immunogen:	Full length human recombinant protein of human IFITM2 (NP_006426) produced in E.coli.
Formulation:	PBS (pH 7.3) containing 1% BSA, 50% glycerol and 0.02% sodium azide.
Concentration:	0.5 mg/ml
Purification:	Purified from mouse ascites fluids or tissue culture supernatant by affinity chromatography (protein A/G)
Conjugation:	Biotin
Storage:	Store at -20°C as received.
Stability:	Stable for 12 months from date of receipt.
Gene Name:	interferon induced transmembrane protein 2
Database Link:	<a href="#">NP_006426</a> <a href="#">Entrez Gene 10581 Human</a> <a href="#">Q01629</a>
Synonyms:	1-8D; DSPA2c
Protein Families:	Transmembrane



[View online »](#)

**Product images:**

HEK293T cells were transfected with the pCMV6-ENTRY control (Left lane) or pCMV6-ENTRY IFITM2 ([RC202067], Right lane) cDNA for 48 hrs and lysed. Equivalent amounts of cell lysates (5 ug per lane) were separated by SDS-PAGE and immunoblotted with anti-IFITM2 (1:2000). Positive lysates [LY401937] (100ug) and [LC401937] (20ug) can be purchased separately from OriGene.