

## Product datasheet for **TA811628M**

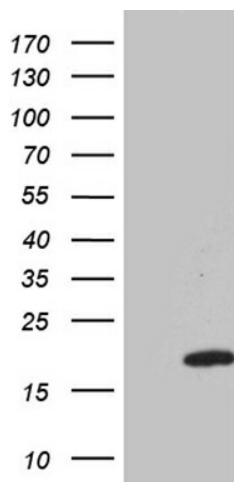
### IFITM2 Mouse Monoclonal Antibody [Clone ID: OTI6D11]

#### Product data:

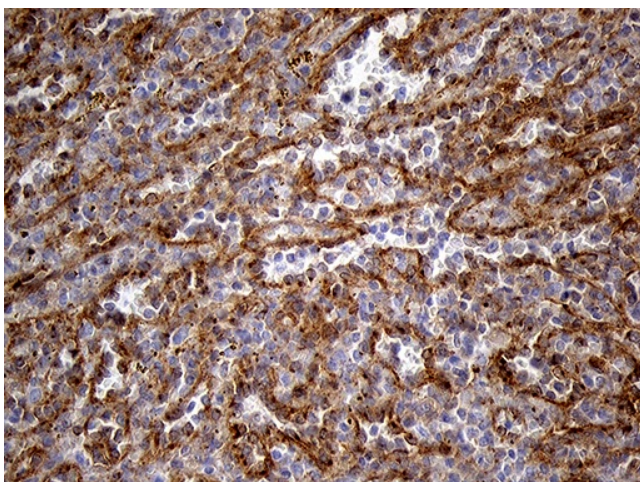
|                       |                                                                                                           |
|-----------------------|-----------------------------------------------------------------------------------------------------------|
| Product Type:         | Primary Antibodies                                                                                        |
| Clone Name:           | OTI6D11                                                                                                   |
| Applications:         | IHC, WB                                                                                                   |
| Recommended Dilution: | WB 1:500, IHC 1:1000                                                                                      |
| Reactivity:           | Human                                                                                                     |
| Host:                 | Mouse                                                                                                     |
| Isotype:              | IgG2a                                                                                                     |
| Clonality:            | Monoclonal                                                                                                |
| Immunogen:            | Full length human recombinant protein of human IFITM2 (NP_006426) produced in E.coli.                     |
| Formulation:          | PBS (pH 7.3) containing 1% BSA, 50% glycerol and 0.02% sodium azide.                                      |
| Concentration:        | 1 mg/ml                                                                                                   |
| Purification:         | Purified from mouse ascites fluids or tissue culture supernatant by affinity chromatography (protein A/G) |
| Conjugation:          | Unconjugated                                                                                              |
| Storage:              | Store at -20°C as received.                                                                               |
| Stability:            | Stable for 12 months from date of receipt.                                                                |
| Gene Name:            | interferon induced transmembrane protein 2                                                                |
| Database Link:        | <a href="#">NP_006426</a><br><a href="#">Entrez Gene 10581 Human</a><br><a href="#">Q01629</a>            |
| Synonyms:             | 1-8D; DSPA2c                                                                                              |
| Protein Families:     | Transmembrane                                                                                             |

[View online »](#)

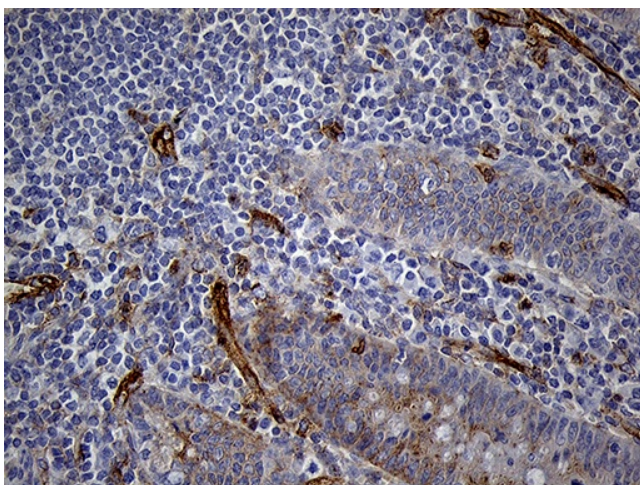
## Product images:



HEK293T cells were transfected with the pCMV6-ENTRY control (Left lane) or pCMV6-ENTRY IFITM2 ([RC202067], Right lane) cDNA for 48 hrs and lysed. Equivalent amounts of cell lysates (5 ug per lane) were separated by SDS-PAGE and immunoblotted with anti-IFITM2 (1:500). Positive lysates [LY401937] (100ug) and [LC401937] (20ug) can be purchased separately from OriGene.



Immunohistochemical staining of paraffin-embedded Human spleen tissue within the normal limits using anti-IFITM2 mouse monoclonal antibody. Heat-induced epitope retrieval by EDTA solution buffer pH 8.0 at 120°C for 3 min.



Immunohistochemical staining of paraffin-embedded Human appendix tissue within the normal limits using anti-IFITM2 mouse monoclonal antibody. Heat-induced epitope retrieval by EDTA solution buffer pH 8.0 at 120°C for 3 min.