

Product datasheet for TA811623M

IL20 Receptor alpha (IL20RA) Mouse Monoclonal Antibody [Clone ID: OTI7H7]

Product data:

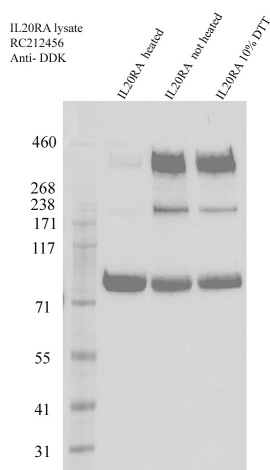
Product Type:	Primary Antibodies
Clone Name:	OTI7H7
Applications:	WB
Recommended Dilution:	WB 1:2000
Reactivity:	Human
Host:	Mouse
Isotype:	IgG1
Clonality:	Monoclonal
Immunogen:	Human recombinant protein fragment corresponding to amino acids 272-553 of human IL20RA (NP_055247) produced in E.coli.
Formulation:	PBS (pH 7.3) containing 1% BSA, 50% glycerol and 0.02% sodium azide.
Concentration:	1 mg/ml
Purification:	Purified from mouse ascites fluids or tissue culture supernatant by affinity chromatography (protein A/G)
Conjugation:	Unconjugated
Storage:	Store at -20°C as received.
Stability:	Stable for 12 months from date of receipt.
Gene Name:	interleukin 20 receptor subunit alpha
Database Link:	NP_055247 Entrez Gene 53832 Human Q9UHF4
Background:	This gene encodes a member of the type II cytokine receptor family. The encoded protein is a subunit of the receptor for interleukin 20, a cytokine that may be involved in epidermal function. The interleukin 20 receptor is a heterodimeric complex consisting of the encoded protein and interleukin 20 receptor beta. This gene and interleukin 20 receptor beta are highly expressed in skin, and are upregulated in psoriasis. Alternative splicing results in multiple transcript variants. [provided by RefSeq, Jul 2013]
Synonyms:	CRF2-8; IL-20R-alpha; IL-20R1; IL-20RA


[View online »](#)

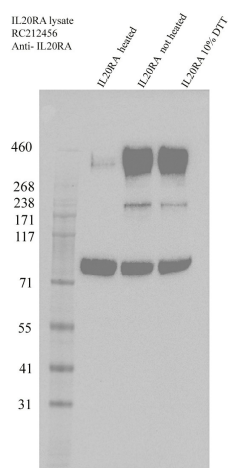
Protein Families: Druggable Genome, Transmembrane

Protein Pathways: Cytokine-cytokine receptor interaction, Jak-STAT signaling pathway

Product images:



HEK293T cells were transfected with pCMV6-ENTRY IL20RA ORF clone(Cat# [RC212546]) for 48 hrs and lysed. Equivalent amounts of cell lysates (Cat# [LY415281]) were prepared under different conditions and immunoblotted with anti-DDK antibody (Cat# [TA50011-100]).



HEK293T cells were transfected with pCMV6-ENTRY IL20RA ORF clone(Cat# [RC212546]) for 48 hrs and lysed. Equivalent amounts of cell lysates (Cat# [LY415281]) were prepared under different conditions and immunoblotted with anti-IL20RA antibody(Cat# [TA811623]).