

Product datasheet for **TA811609AM**

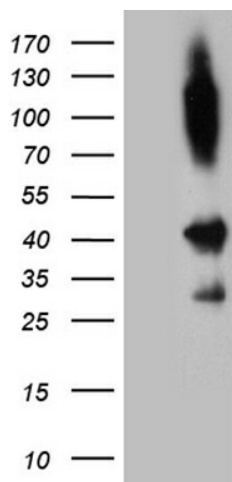
SHARPIN Mouse Monoclonal Antibody (Biotin conjugated) [Clone ID: OTI1D11]

Product data:

Product Type:	Primary Antibodies
Clone Name:	OTI1D11
Applications:	WB
Recommended Dilution:	WB 1:2000
Reactivity:	Human
Host:	Mouse
Isotype:	IgG2a
Clonality:	Monoclonal
Immunogen:	Human recombinant protein fragment corresponding to amino acids 1-326 of human SHARPIN (NP_112236) produced in E.coli.
Formulation:	PBS (pH 7.3) containing 1% BSA, 50% glycerol and 0.02% sodium azide.
Concentration:	0.5 mg/ml
Purification:	Purified from mouse ascites fluids or tissue culture supernatant by affinity chromatography (protein A/G)
Conjugation:	Biotin
Storage:	Store at -20°C as received.
Stability:	Stable for 12 months from date of receipt.
Gene Name:	SHANK associated RH domain interactor
Database Link:	NP_112236 Entrez Gene 81858 Human Q9H0F6
Synonyms:	SIPL1
Protein Families:	Druggable Genome



[View online »](#)

Product images:

HEK293T cells were transfected with the pCMV6-ENTRY control (Left lane) or pCMV6-ENTRY SHARPIN ([RC222012], Right lane) cDNA for 48 hrs and lysed. Equivalent amounts of cell lysates (5 ug per lane) were separated by SDS-PAGE and immunoblotted with anti-SHARPIN (1:2000). Positive lysates [LY410637] (100ug) and [LC410637] (20ug) can be purchased separately from OriGene.