

## Product datasheet for **TA811603BM**

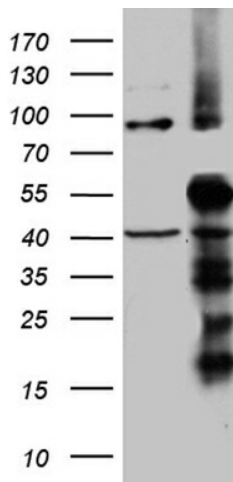
### **TIMM50 Mouse Monoclonal Antibody (HRP conjugated) [Clone ID: OTI1E9]**

#### **Product data:**

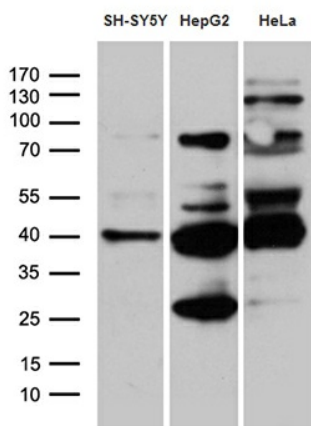
Product Type:	Primary Antibodies
Clone Name:	OTI1E9
Applications:	WB
Recommended Dilution:	WB 1:500~2000
Reactivity:	Human, Mouse, Rat
Host:	Mouse
Isotype:	IgG2b
Clonality:	Monoclonal
Immunogen:	Human recombinant protein fragment corresponding to amino acids 45-353 of human TIMM50 (NP_001001563) produced in E.coli.
Formulation:	PBS (pH 7.3) containing 1% BSA, 50% glycerol.
Concentration:	0.5 mg/ml
Purification:	Purified from mouse ascites fluids or tissue culture supernatant by affinity chromatography (protein A/G)
Conjugation:	HRP
Storage:	Store at -20°C as received.
Stability:	Stable for 12 months from date of receipt.
Gene Name:	translocase of inner mitochondrial membrane 50
Database Link:	<a href="#">NP_001001563</a> <a href="#">Entrez Gene 66525 Mouse</a> <a href="#">Entrez Gene 687295 Rat</a> <a href="#">Entrez Gene 92609 Human</a> <a href="#">Q3ZCQ8</a>
Synonyms:	TIM50; TIM50L



[View online »](#)

**Product images:**


HEK293T cells were transfected with the pCMV6-ENTRY control (Cat# [PS100001], Left lane) or pCMV6-ENTRY TIMM50 (Cat# [RC224744], Right lane) cDNA for 48 hrs and lysed. Equivalent amounts of cell lysates (5 ug per lane) were separated by SDS-PAGE and immunoblotted with anti-TIMM50 (Cat# [TA811603])(1:2000). Positive lysates [LY424383] (100ug) and [LC424383] (20ug) can be purchased separately from OriGene.



Western blot analysis of extracts (35ug) from 3 different cell lines by using anti-TIMM50 monoclonal antibody (1:500).