

Product datasheet for **TA811597**

CRMP2 (DPYSL2) Mouse Monoclonal Antibody [Clone ID: OTI2C9]

Product data:

Product Type:	Primary Antibodies
Clone Name:	OTI2C9
Applications:	WB
Recommended Dilution:	WB 1:2000
Reactivity:	Human, Mouse, Rat
Host:	Mouse
Isotype:	IgG1
Clonality:	Monoclonal
Immunogen:	Human recombinant protein fragment corresponding to amino acids 13-490 of human DPYSL2 (NP_001377) produced in E.coli.
Formulation:	PBS (pH 7.3) containing 1% BSA, 50% glycerol and 0.02% sodium azide.
Concentration:	1 mg/ml
Purification:	Purified from mouse ascites fluids or tissue culture supernatant by affinity chromatography (protein A/G)
Conjugation:	Unconjugated
Storage:	Store at -20°C as received.
Stability:	Stable for 12 months from date of receipt.
Gene Name:	dihydropyrimidinase like 2
Database Link:	NP_001377 Entrez Gene 12934 Mouse Entrez Gene 25416 Rat Entrez Gene 1808 Human Q16555



[View online »](#)

Background:

This gene encodes a member of the collapsin response mediator protein family. Collapsin response mediator proteins form homo- and hetero-tetramers and facilitate neuron guidance, growth and polarity. The encoded protein promotes microtubule assembly and is required for Sema3A-mediated growth cone collapse, and also plays a role in synaptic signaling through interactions with calcium channels. This gene has been implicated in multiple neurological disorders, and hyperphosphorylation of the encoded protein may play a key role in the development of Alzheimer's disease. Alternatively spliced transcript variants encoding multiple isoforms have been observed for this gene. [provided by RefSeq, Sep 2011]

Synonyms:

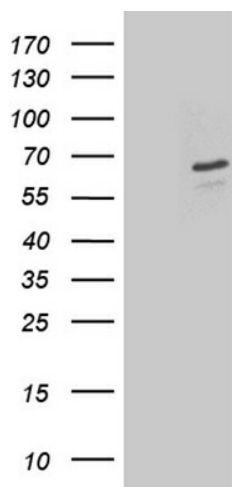
CRMP-2; CRMP2; DHPRP2; DRP-2; DRP2; N2A3; ULIP-2; ULIP2

Protein Families:

Druggable Genome

Protein Pathways:

Axon guidance

Product images:

HEK293T cells were transfected with the pCMV6-ENTRY control (Left lane) or pCMV6-ENTRY DPYSL2 ([RC209080], Right lane) cDNA for 48 hrs and lysed. Equivalent amounts of cell lysates (5 ug per lane) were separated by SDS-PAGE and immunoblotted with anti-DPYSL2 (1:2000). Positive lysates [LY419992] (100ug) and [LC419992] (20ug) can be purchased separately from OriGene.