

## Product datasheet for **TA811586M**

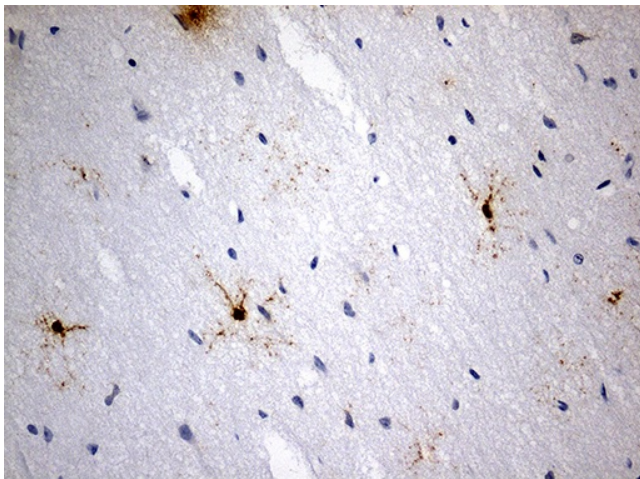
### GPR17 Mouse Monoclonal Antibody [Clone ID: OTI6A3]

#### Product data:

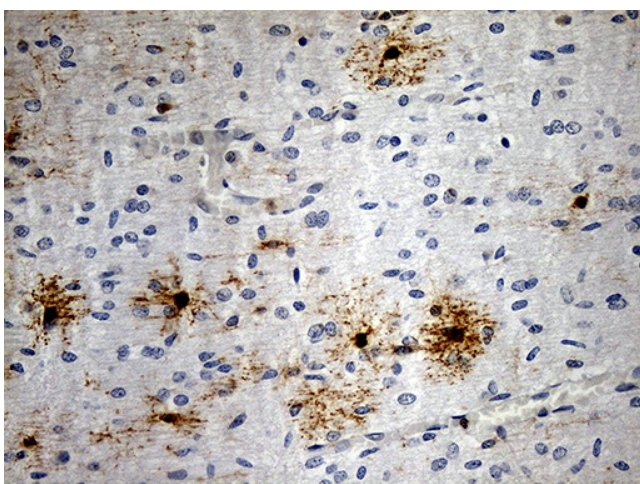
Product Type:	Primary Antibodies
Clone Name:	OTI6A3
Applications:	IHC
Recommended Dilution:	IHC 1:100~150
Reactivity:	Human, Mouse, Rat
Host:	Mouse
Isotype:	IgG1
Clonality:	Monoclonal
Immunogen:	Synthetic peptide (the amino acid sequence is considered to be commercially sensitive) within Human GPR17 C-terminal. The exact sequence is proprietary.
Formulation:	PBS (pH 7.3) containing 1% BSA, 50% glycerol and 0.02% sodium azide.
Concentration:	1 mg/ml
Purification:	Purified from mouse ascites fluids or tissue culture supernatant by affinity chromatography (protein A/G)
Conjugation:	Unconjugated
Storage:	Store at -20°C as received.
Stability:	Stable for 12 months from date of receipt.
Gene Name:	G protein-coupled receptor 17
Database Link:	<a href="#">NP_005282</a> <a href="#">Entrez Gene 574402 Mouse</a> <a href="#">Entrez Gene 767613 Rat</a> <a href="#">Entrez Gene 2840 Human</a> <a href="#">Q13304</a>
Synonyms:	DKFZp686M18273
Protein Families:	Druggable Genome, GPCR, Transmembrane

[View online »](#)

## Product images:

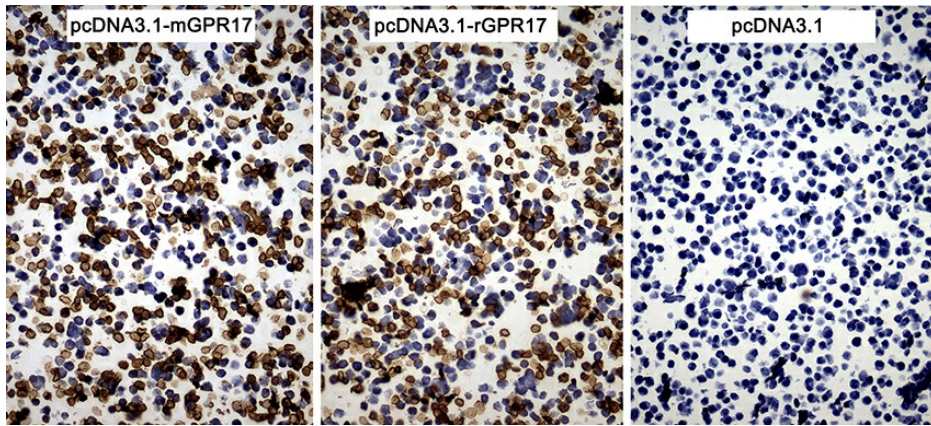


Immunohistochemical staining of paraffin-embedded Human adult brain tissue within the normal limits using anti-GPR17 mouse monoclonal antibody. Heat-induced epitope retrieval by EDTA solution buffer pH 8.0 at 120°C for 3 min.

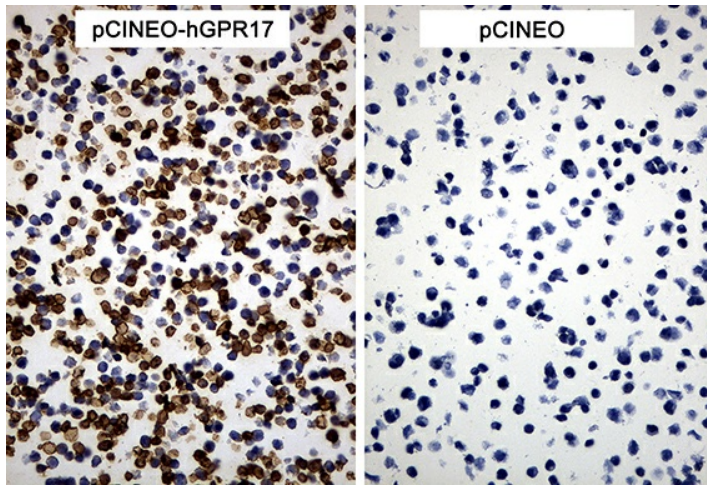


Immunohistochemical staining of paraffin-embedded Human embryonic cerebellum within the normal limits using anti-GPR17 mouse monoclonal antibody. Heat-induced epitope retrieval by EDTA solution buffer pH 8.0 at 120°C for 3 min.

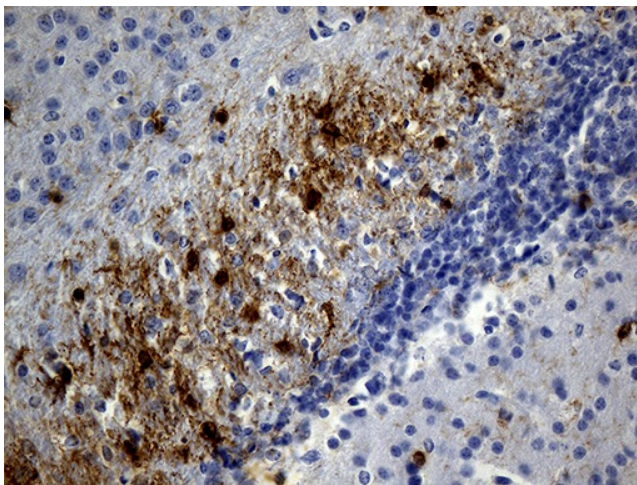




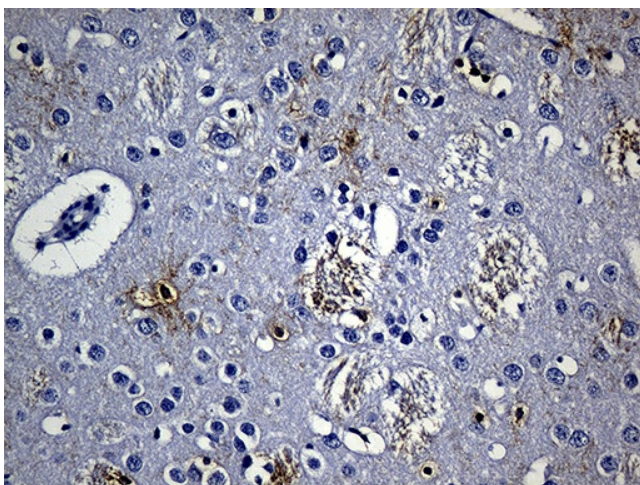
Immunohistochemical staining of paraffin-embedded cell pellets of 293T cells transfected with pcDNA3.1-mGPR17, pcDNA3.1-rGPR17 or pcDNA3.1 using anti-GPR17 Mouse monoclonal antibody. Heat-induced epitope retrieval by EDTA solution buffer pH 8.0 at 120°C for 3 min.



Immunohistochemical staining of paraffin-embedded cell pellets of 293T cells transfected with pCINEO-hGPR17 or pCINEO plasmids using anti-GPR17 Mouse monoclonal antibody. Heat-induced epitope retrieval by EDTA solution buffer pH 8.0 at 120°C for 3 min.



Immunohistochemical staining of paraffin-embedded mouse cerebrum tissue within the normal limits using anti-GPR17 mouse monoclonal antibody. Heat-induced epitope retrieval by EDTA solution buffer pH 8.0 at 120°C for 3 min.



Immunohistochemical staining of paraffin-embedded rat cerebrum tissue within the normal limits using anti-GPR17 mouse monoclonal antibody. Heat-induced epitope retrieval by EDTA solution buffer pH 8.0 at 120°C for 3 min.