

## Product datasheet for **TA811585BM**

### **C2CD6 Mouse Monoclonal Antibody (HRP conjugated) [Clone ID: OTI7A8]**

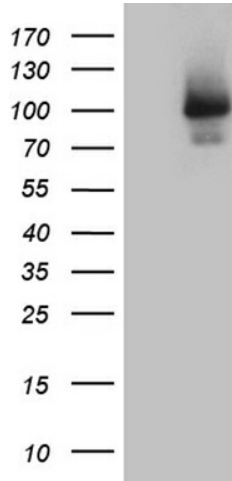
#### **Product data:**

Product Type:	Primary Antibodies
Clone Name:	OTI7A8
Applications:	WB
Recommended Dilution:	WB 1:500~2000
Reactivity:	Human
Host:	Mouse
Isotype:	IgG1
Clonality:	Monoclonal
Immunogen:	Human recombinant protein fragment corresponding to amino acids 307-623 of human ALS2CR11 (NP_689738) produced in E.coli.
Formulation:	PBS (pH 7.3) containing 1% BSA, 50% glycerol.
Concentration:	0.5 mg/ml
Purification:	Purified from mouse ascites fluids or tissue culture supernatant by affinity chromatography (protein A/G)
Conjugation:	HRP
Storage:	Store at -20°C as received.
Stability:	Stable for 12 months from date of receipt.
Predicted Protein Size:	71 kDa
Gene Name:	amyotrophic lateral sclerosis 2 chromosome region candidate 11
Database Link:	<a href="#">NP_689738</a> <a href="#">Entrez Gene 151254 Human</a> <a href="#">Q53TS8</a>
Synonyms:	DKFZp686H0636; FLJ25351; FLJ40332

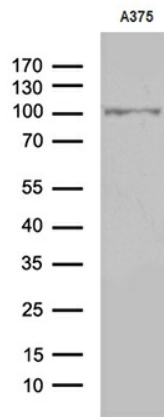


[View online »](#)

**Product images:**



HEK293T cells were transfected with the pCMV6-ENTRY control (Cat# [PS100001], Left lane) or pCMV6-ENTRY ALS2CR11 (Cat# [RC206143], Right lane) cDNA for 48 hrs and lysed. Equivalent amounts of cell lysates (5 ug per lane) were separated by SDS-PAGE and immunoblotted with anti-ALS2CR11 (Cat# [TA811585])(1:2000). Positive lysates [LY407479] (100ug) and [LC407479] (20ug) can be purchased separately from OriGene.



Western blot analysis of extracts (35ug) from A375 cell line by using anti-ALS2CR11 monoclonal antibody (1:500).