

## Product datasheet for **TA811583**

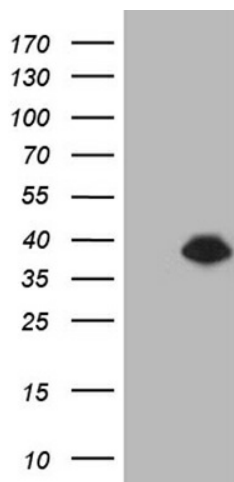
### DTWD1 Mouse Monoclonal Antibody [Clone ID: OTI2B5]

#### Product data:

Product Type:	Primary Antibodies
Clone Name:	OTI2B5
Applications:	WB
Recommended Dilution:	WB 1:2000
Reactivity:	Human
Host:	Mouse
Isotype:	IgG2b
Clonality:	Monoclonal
Immunogen:	Full length human recombinant protein of human DTWD1 (NP_001138427) produced in E.coli.
Formulation:	PBS (pH 7.3) containing 1% BSA, 50% glycerol and 0.02% sodium azide.
Concentration:	1 mg/ml
Purification:	Purified from mouse ascites fluids or tissue culture supernatant by affinity chromatography (protein A/G)
Conjugation:	Unconjugated
Storage:	Store at -20°C as received.
Stability:	Stable for 12 months from date of receipt.
Gene Name:	DTW domain containing 1
Database Link:	<a href="#">NP_001138427</a> <a href="#">Entrez Gene 56986 Human</a> <a href="#">Q8N5C7</a>
Synonyms:	MDS009



[View online »](#)

**Product images:**

HEK293T cells were transfected with the pCMV6-ENTRY control (Left lane) or pCMV6-ENTRY DTWD1 ([RC227602], Right lane) cDNA for 48 hrs and lysed. Equivalent amounts of cell lysates (5 ug per lane) were separated by SDS-PAGE and immunoblotted with anti-DTWD1 (1:2000). Positive lysates [LY428603] (100ug) and [LC428603] (20ug) can be purchased separately from OriGene.