

## Product datasheet for **TA811581AM**

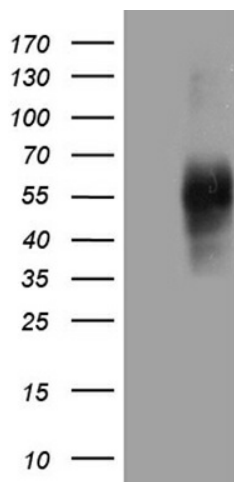
### **SIRPB1 Mouse Monoclonal Antibody (Biotin conjugated) [Clone ID: OTI8C5]**

#### **Product data:**

Product Type:	Primary Antibodies
Clone Name:	OTI8C5
Applications:	WB
Recommended Dilution:	WB 1:2000
Reactivity:	Human
Host:	Mouse
Isotype:	IgG1
Clonality:	Monoclonal
Immunogen:	Human recombinant protein fragment corresponding to amino acids 30-398 of human SIRPB1 (NP_006056) produced in E.coli.
Formulation:	PBS (pH 7.3) containing 1% BSA, 50% glycerol and 0.02% sodium azide.
Concentration:	0.5 mg/ml
Purification:	Purified from mouse ascites fluids or tissue culture supernatant by affinity chromatography (protein A/G)
Conjugation:	Biotin
Storage:	Store at -20°C as received.
Stability:	Stable for 12 months from date of receipt.
Predicted Protein Size:	43.2 kDa
Gene Name:	signal regulatory protein beta 1
Database Link:	<a href="#">NP_006056</a> <a href="#">Entrez Gene 10326 Human</a> <a href="#">O00241</a>
Synonyms:	CD172b; SIRP-BETA-1
Protein Families:	Druggable Genome, Transmembrane



[View online »](#)

**Product images:**

HEK293T cells were transfected with the pCMV6-ENTRY control (Left lane) or pCMV6-ENTRY SIRPB1 ([RC211765], Right lane) cDNA for 48 hrs and lysed. Equivalent amounts of cell lysates (5 ug per lane) were separated by SDS-PAGE and immunoblotted with anti-SIRPB1 (1:2000). Positive lysates [LY416898] (100ug) and [LC416898] (20ug) can be purchased separately from OriGene.