

Product datasheet for **TA811579S**

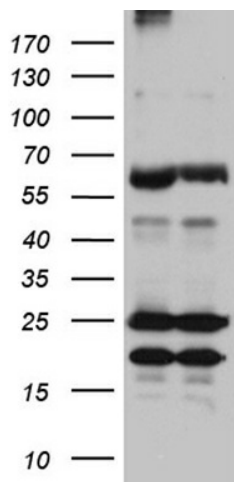
ZFP57 Mouse Monoclonal Antibody [Clone ID: OTI1E2]

Product data:

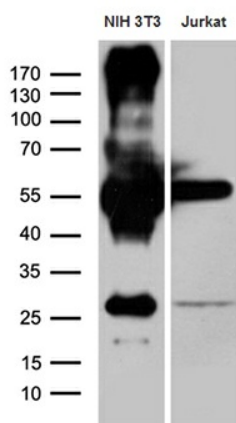
Product Type:	Primary Antibodies
Clone Name:	OTI1E2
Applications:	IHC, WB
Recommended Dilution:	WB 1:500~2000, IHC 1:2000
Reactivity:	Human, Mouse
Host:	Mouse
Isotype:	IgG1
Clonality:	Monoclonal
Immunogen:	Full length human recombinant protein of human ZFP57 (NP_001103279) produced in E.coli.
Formulation:	PBS (pH 7.3) containing 1% BSA, 50% glycerol and 0.02% sodium azide.
Concentration:	1 mg/ml
Purification:	Purified from mouse ascites fluids or tissue culture supernatant by affinity chromatography (protein A/G)
Conjugation:	Unconjugated
Storage:	Store at -20°C as received.
Stability:	Stable for 12 months from date of receipt.
Gene Name:	ZFP57 zinc finger protein
Database Link:	NP_001103279 Entrez Gene 22715 Mouse Entrez Gene 346171 Human Q9NU63
Background:	The protein encoded by this gene is a zinc finger protein containing a KRAB domain. Studies in mouse suggest that this protein may function as a transcriptional repressor. Mutations in this gene have been associated with transient neonatal diabetes mellitus type 1 (TNDM1). [provided by RefSeq, Sep 2009]
Synonyms:	bA145L22; bA145L22.2; C6orf40; TNDM1; ZNF698
Protein Families:	ES Cell Differentiation/IPS



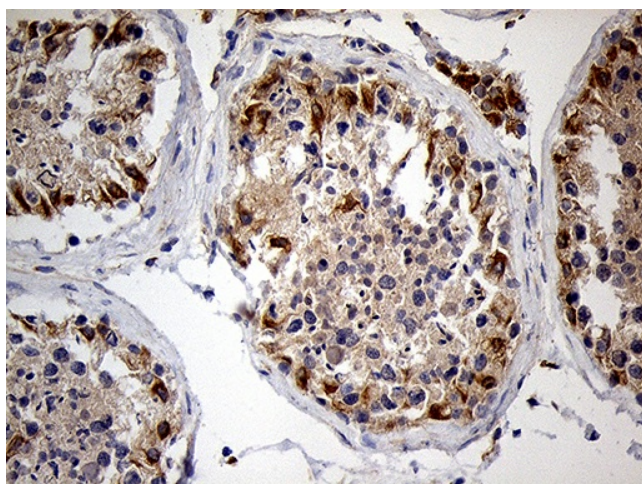
[View online »](#)

Product images:


HEK293T cells were transfected with the pCMV6-ENTRY control (Cat# [PS100001], Left lane) or pCMV6-ENTRY ZFP57 (Cat# [RC229273], Right lane) cDNA for 48 hrs and lysed. Equivalent amounts of cell lysates (5 ug per lane) were separated by SDS-PAGE and immunoblotted with anti-ZFP57 (Cat# [TA811579])(1:2000). Positive lysates [LY432292] (100ug) and [LC432292] (20ug) can be purchased separately from OriGene.



Western blot analysis of extracts (35ug) from 2 different cell lines by using anti-ZFP57 monoclonal antibody (1:500).



Immunohistochemical staining of paraffin-embedded Human testicle tissue within the normal limits using anti-ZFP57 mouse monoclonal antibody. (Heat-induced epitope retrieval by 1mM EDTA in 10mM Tris buffer (pH8.5) at 120°C for 3min, [TA811579]) (1:2000)

