

Product datasheet for **TA811576AM**

DTWD1 Mouse Monoclonal Antibody (Biotin conjugated) [Clone ID: OTI1D2]

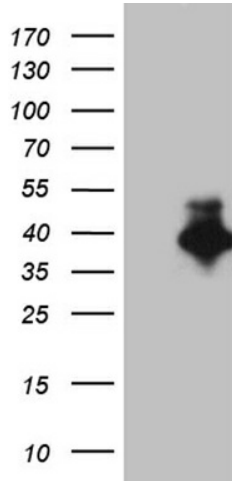
Product data:

Product Type:	Primary Antibodies
Clone Name:	OTI1D2
Applications:	IHC, WB
Recommended Dilution:	WB 1:500~2000, IHC 1:500
Reactivity:	Human
Host:	Mouse
Isotype:	IgG2a
Clonality:	Monoclonal
Immunogen:	Full length human recombinant protein of human DTWD1 (NP_001138427) produced in E.coli.
Formulation:	PBS (pH 7.3) containing 1% BSA, 50% glycerol and 0.02% sodium azide.
Concentration:	0.5 mg/ml
Purification:	Purified from mouse ascites fluids or tissue culture supernatant by affinity chromatography (protein A/G)
Conjugation:	Biotin
Storage:	Store at -20°C as received.
Stability:	Stable for 12 months from date of receipt.
Gene Name:	DTW domain containing 1
Database Link:	NP_001138427 Entrez Gene 56986 Human Q8N5C7
Synonyms:	MDS009

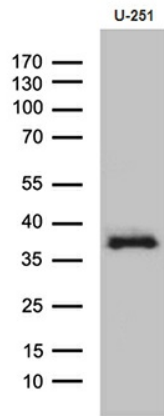


[View online »](#)

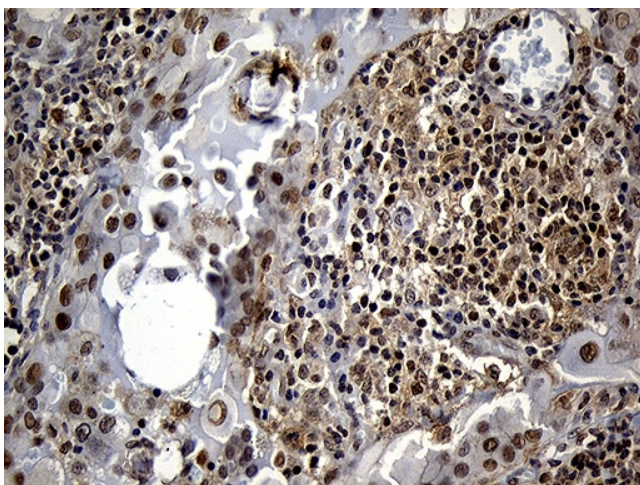
Product images:



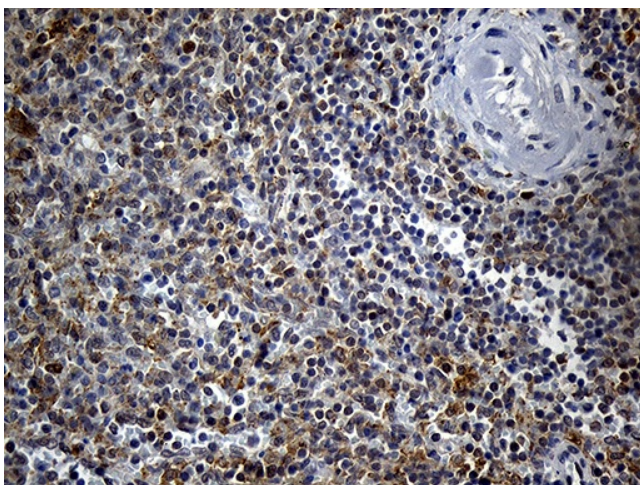
HEK293T cells were transfected with the pCMV6-ENTRY control (Cat# [PS100001], Left lane) or pCMV6-ENTRY DTWD1 (Cat# [RC227602], Right lane) cDNA for 48 hrs and lysed. Equivalent amounts of cell lysates (5 ug per lane) were separated by SDS-PAGE and immunoblotted with anti-DTWD1 (Cat# [TA811576])(1:2000). Positive lysates [LY428603] (100ug) and [LC428603] (20ug) can be purchased separately from OriGene.



Western blot analysis of extracts (35ug) from U251 cell line by using anti-DTWD1 monoclonal antibody (1:500).



Immunohistochemical staining of paraffin-embedded Carcinoma of Human thyroid tissue using anti-DTWD1 mouse monoclonal antibody. (Heat-induced epitope retrieval by 1mM EDTA in 10mM Tris buffer (pH8.5) at 120°C for 3min, [TA811576]) (1:500)



Immunohistochemical staining of paraffin-embedded Human spleen tissue within the normal limits using anti-DTWD1 mouse monoclonal antibody. (Heat-induced epitope retrieval by 1mM EDTA in 10mM Tris buffer (pH8.5) at 120°C for 3min, [TA811576]) (1:500)