

## Product datasheet for **TA811571BM**

### Repulsive Guidance Molecule A (RGMA) Mouse Monoclonal Antibody (HRP conjugated) [Clone ID: OTI1C5]

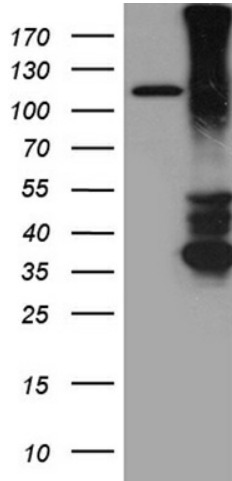
#### Product data:

Product Type:	Primary Antibodies
Clone Name:	OTI1C5
Applications:	WB
Recommended Dilution:	WB 1:2000
Reactivity:	Human, Mouse, Rat
Host:	Mouse
Isotype:	IgG2a
Clonality:	Monoclonal
Immunogen:	Human recombinant protein fragment corresponding to amino acids 169-424 of human RGMA (NP_064596) produced in E.coli.
Formulation:	PBS (pH 7.3) containing 1% BSA, 50% glycerol.
Concentration:	0.5 mg/ml
Purification:	Purified from mouse ascites fluids or tissue culture supernatant by affinity chromatography (protein A/G)
Conjugation:	HRP
Storage:	Store at -20°C as received.
Stability:	Stable for 12 months from date of receipt.
Predicted Protein Size:	49.2 kDa
Gene Name:	repulsive guidance molecule family member a
Database Link:	<a href="#">NP_064596</a> <a href="#">Entrez Gene 244058 Mouse</a> <a href="#">Entrez Gene 308739 Rat</a> <a href="#">Entrez Gene 56963 Human</a> <a href="#">Q96B86</a>
Synonyms:	RGM



[View online »](#)

**Product images:**



HEK293T cells were transfected with the pCMV6-ENTRY control (Cat# [PS100001], Left lane) or pCMV6-ENTRY RGMA (Cat# [RC221996], Right lane) cDNA for 48 hrs and lysed. Equivalent amounts of cell lysates (5 ug per lane) were separated by SDS-PAGE and immunoblotted with anti-RGMA (Cat# [TA811571])(1:2000). Positive lysates [LY402781] (100ug) and [LC402781] (20ug) can be purchased separately from OriGene.