

## Product datasheet for TA811571

### Repulsive Guidance Molecule A (RGMA) Mouse Monoclonal Antibody [Clone ID: OT11C5]

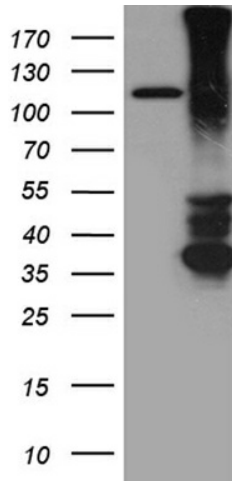
#### Product data:

Product Type:	Primary Antibodies
Clone Name:	OT11C5
Applications:	WB
Recommended Dilution:	WB 1:2000
Reactivity:	Human, Mouse, Rat
Host:	Mouse
Isotype:	IgG2a
Clonality:	Monoclonal
Immunogen:	Human recombinant protein fragment corresponding to amino acids 169-424 of human RGMA (NP_064596) produced in E.coli.
Formulation:	PBS (PH 7.3) containing 1% BSA, 50% glycerol and 0.02% sodium azide.
Concentration:	1 mg/ml
Purification:	Purified from mouse ascites fluids or tissue culture supernatant by affinity chromatography (protein A/G)
Storage:	Store at -20°C as received.
Stability:	Stable for 12 months from date of receipt.
Predicted Protein Size:	49.2 kDa
Gene Name:	repulsive guidance molecule family member a
Database Link:	<a href="#">NP_064596</a> <a href="#">Entrez Gene 244058</a> <a href="#">MouseEntrez Gene 308739</a> <a href="#">RatEntrez Gene 56963</a> <a href="#">Human</a>
Synonyms:	RGM



[View online »](#)

## Product images:



HEK293T cells were transfected with the pCMV6-ENTRY control (Cat# [PS100001], Left lane) or pCMV6-ENTRY RGMA (Cat# [RC221996], Right lane) cDNA for 48 hrs and lysed. Equivalent amounts of cell lysates (5 ug per lane) were separated by SDS-PAGE and immunoblotted with anti-RGMA (Cat# TA811571)(1:2000). Positive lysates [LY402781] (100ug) and [LC402781] (20ug) can be purchased separately from OriGene.